

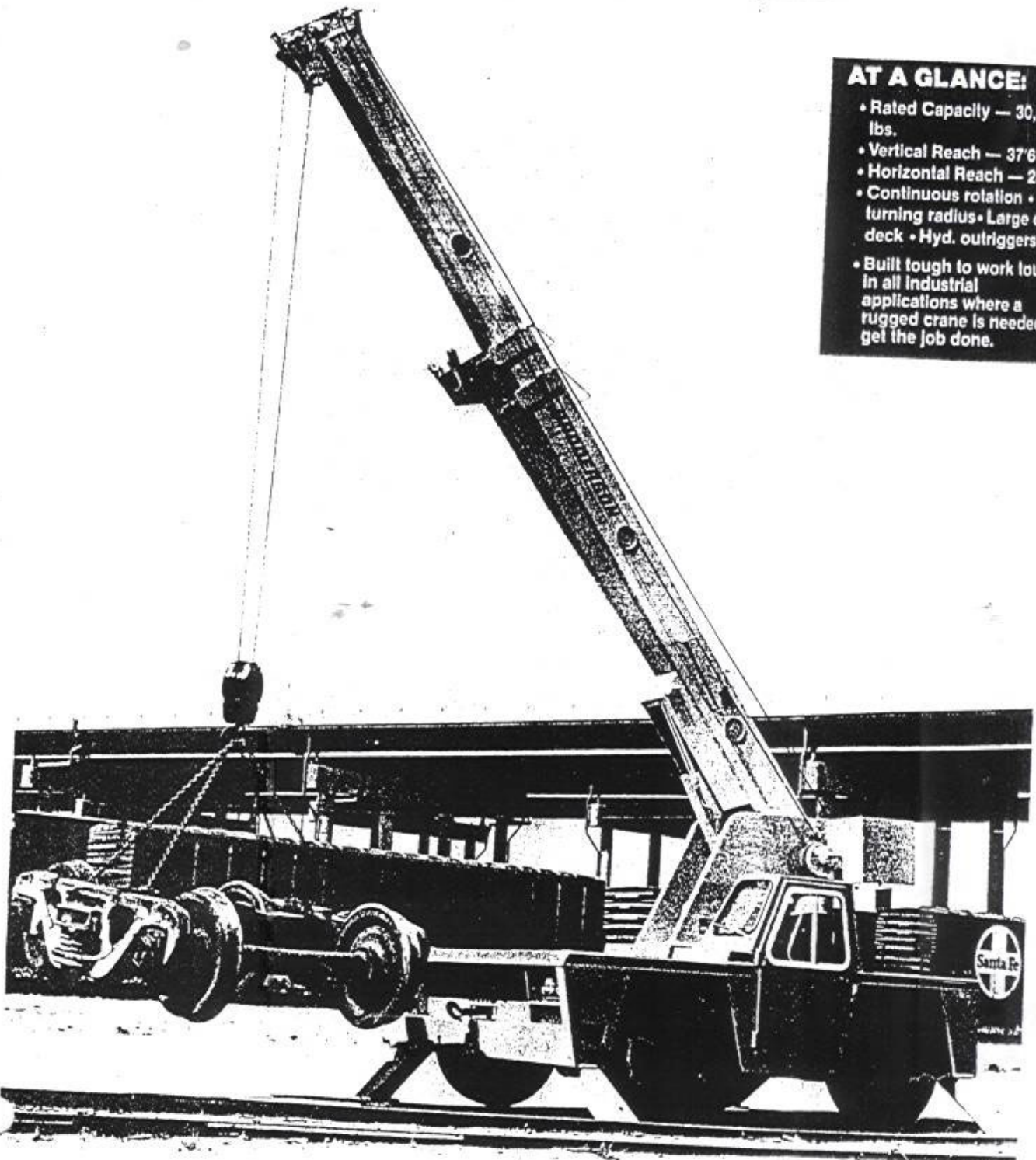
**TECH
SPEC**

IC-180

15TON Broderon #150

AT A GLANCE:

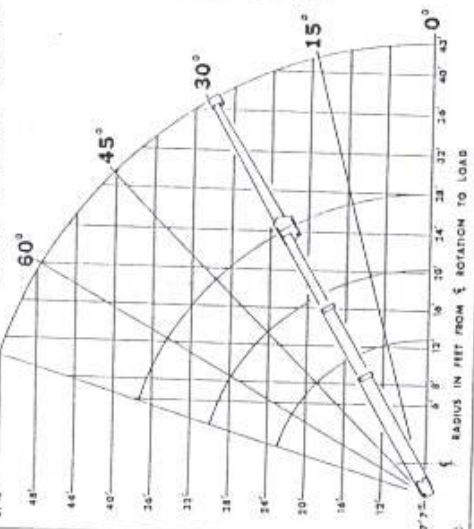
- Rated Capacity — 30,000 lbs.
- Vertical Reach — 37'6"
- Horizontal Reach — 28'0"
- Continuous rotation • 18'4" turning radius • Large carry deck • Hyd. outriggers •
- Built tough to work tough in all industrial applications where a rugged crane is needed to get the job done.



BMD BRODERSON
Manufacturing Corp.

28' main 15' JIB

73° CRANE CAPACITY CHART



LOAD RADIUS FEET	BOOMS RETRACTED		BOOMS EXTENDED		15' BOOM EXTENSION INSTALLED	
	ON OUTRIGGERS	ON RUBBER	ON RUBBER	ON OUTRIGGERS	ON RUBBER	ON OUTRIGGERS
0	30000	14000	30000	30000	7500	7500
8	25000	11000	24000	24000	7500	7500
10	20000	9400	20000	20000	7100	7100
12	16000	8000	16000	16000	6150	6150
14		6800		11950	5425	5425
16		5700		10500	4850	4850
19		4325		8875	4175	4175
22		3350		7600	3675	3675
25		2775		6350	3275	3275
31		2400		5300	2950	3000
34					2350	3000
38					1925	3000
43					1475	3000
					1100	2800

USE SINGLE PART LOAD LINE FOR LOADS TO 7500 LBS.

USE TWO PART LOAD LINE FOR LOADS TO 15000 LBS.

USE FOUR PART LOAD LINE FOR LOADS TO 30000 LBS.

CARRY CAPACITY SPEED LIMIT 3 MPH
 DECK CAPACITY 17000 LBS. (CENTERS OVER FRONT AXLE OR BETWEEN AXLES)
 PERSONNEL BUCKET CAPACITY, OUTRIGGERS EXTENDED, 300 LBS.
 PER BUCKET 600 LBS. TOTAL. THE BOOMS ON THIS UNIT ARE ALL STEEL AND HAVE NO LINE VOLTAGE KATINGS.
 MAXIMUM HYDRAULIC PRESSURE 2800 PSI.
 WHEN BOOM EXTENSION IS STOWED ON BASE BOOM:
 DEDUCT 300 LBS. FROM ALL "ON OUTRIGGERS" CAPACITIES.
 DEDUCT 275 LBS. FROM ALL "ON RUBBER" CAPACITIES.
 ALL CAPACITIES APPLY TO OPERATION ON FIRM LEVEL SURFACES.
 OPERATION:
 1. READ AND UNDERSTAND OWNERS MANUAL BEFORE OPERATING THIS CRANE.
 2. CHECK LEVEL OF HYDRAULIC OIL DAILY.
 3. CHECK UNIT FOR VISIBLE DEFECTS AND LOOSE PARTS.
 4. START ENGINE.
 5. SET VEHICLE PARK BRAKE SECURELY.
 6. EXTEND OUTRIGGERS TO SOLID FOOTING.
 7. OPERATE ALL HYDRAULIC CONTROLS SLOWLY AND DELIBERATELY FOR SMOOTH MOTION.
 THE LOAD HOIST LINE ON THIS UNIT MUST BE 1/2" DIA. 3 X 25-EP-1WFC WIRE ROPE (OR EQUIVALENT) WITH A MINIMUM BREAKING STRENGTH OF 28,000 LBS.

MODEL NO. [REDACTED] SERIAL NO. [REDACTED]
 BRODERSON MANUFACTURING CORP.
 P.O. BOX 14770 LENEXA, KANSAS 66215
 4-LSI-000106

Gross wt. 27,800
 Do Not Carry on Roll Bed