

HC-248H Tubular Jib Capacities - Open Throat Boom

Refer to notes on page 6.

Counterweights:
Upper cwt. "ABC": 63,440 lbs. (28 776 kg)
Bumper cwt. "A": 13,500 lbs. (6 124 kg)
Bumper cwt. "AB": 25,000 lbs. (11 340 kg)

Mounting - Link-Belt carrier:
8 x 4 drive, 282" (7.16 m) wheelbase 11' 0"
(3.35 m) wide.

Jib - tube: 32" (.81 m) wide,
24" (.61 m) deep.

Boom - tube: 80" (2.03 m) wide and
68" (1.73 m) deep with open throat top section.

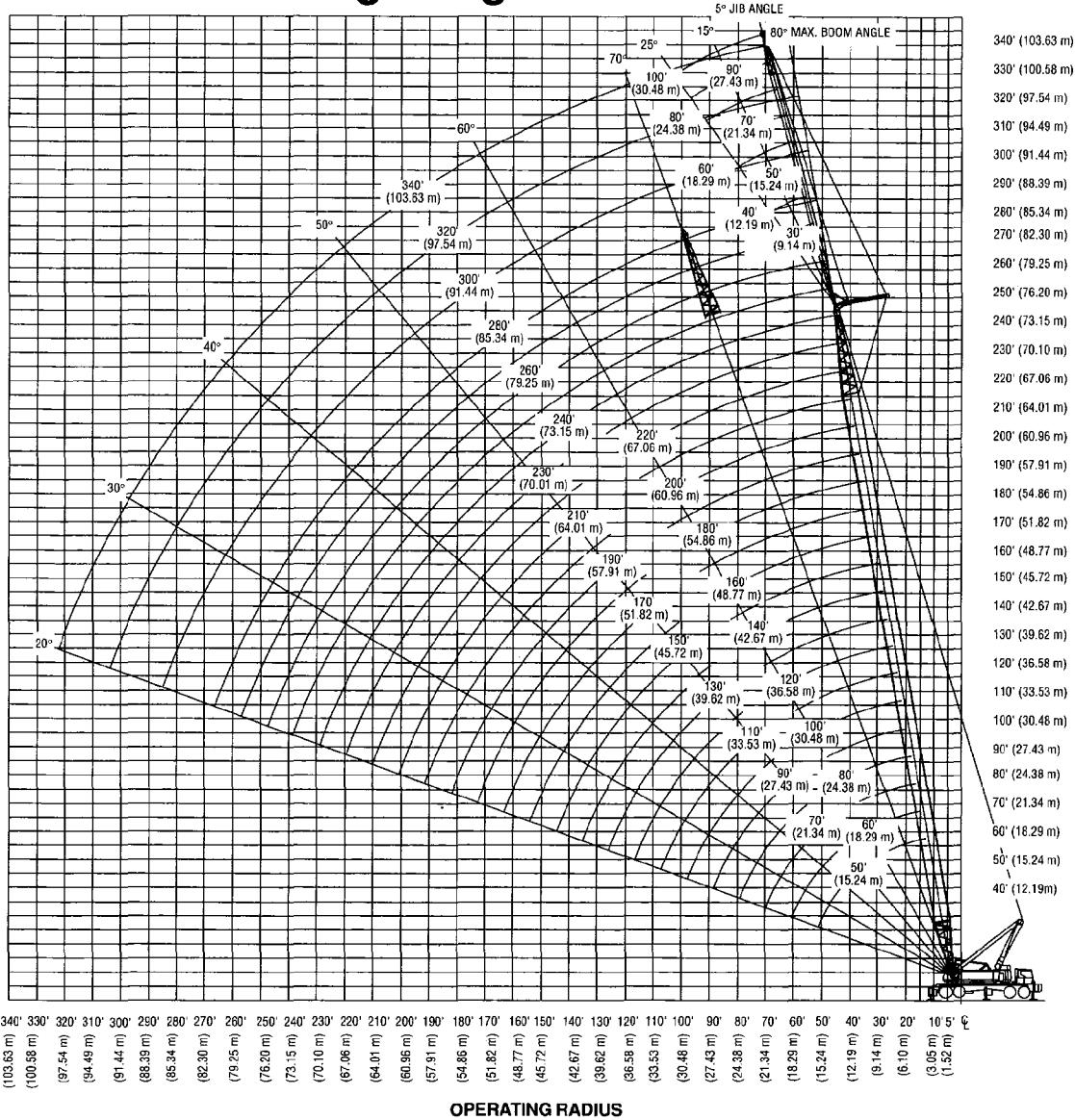
Boom Length	Lifting Capacities - Tubular Jib - Open Throat Boom																									
	30' jib			40' jib			50' jib			60' jib			70' jib			80' jib			90' jib			100' jib				
Jib Radius	5°	15°	25°	5°	15°	25°	5°	15°	25°	5°	15°	25°	5°	15°	25°	5°	15°	25°	5°	15°	25°	5°	15°	25°		
18	40,000*																									
19	40,000*																									
20	40,000*	36,000*																								
25	40,000*	40,000*	40,000*	36,000*	35,600*		26,900*																			
30	40,000*	40,000*	40,000*	36,000*	35,200*	34,600*	26,700*	26,500*	26,000*																	
35	40,000*	40,000*	40,000*	36,000*	35,200*	34,600*	26,500*	26,300*	25,400*																	
40	40,000*	40,000*	40,000*	35,500*	34,800*	32,300*	27,400*	26,300*	25,400*																	
50	40,000*	40,000*	40,000*	34,500*	34,300*	27,700*	29,200*	29,500*	23,300*	22,300*																
60	39,800*	35,700*	30,600*	34,200*	29,900*	24,400*	29,100*	25,400*	22,300*	21,000*																
70	33,900*	31,500*		29,200*	26,300*	22,600*	22,800*	21,300*	17,900*	22,000*																
80				25,500*	23,600*		21,600*	19,300*		19,300*	16,600*	14,000*	15,400*	17,200*	16,400*	13,500*	12,200*	13,300*	12,800*	10,900*	10,000*	9,700*	7,200*	7,000*	6,700*	
90										15,000*	13,300*	11,300*	12,600*	11,900*	9,900*	9,700*	9,400*	8,900*	9,300*	9,000*	8,100*	8,000*	6,500*	6,000*	6,400*	
100										14,000*	12,300*															
110																										
120																										
130																										
140																										
25	40,000*			36,000*																						
30	40,000*	40,000*		36,000*																						
35	40,000*	40,000*	40,000*	36,000*	35,700*		26,900*																			
40	40,000*	40,000*	40,000*	36,000*	35,300*	34,600*	26,700*	26,600*	26,000*																	
50	40,000*	40,000*	40,000*	35,600*	34,700*	31,000*	26,600*	26,200*	25,000*	22,400*	20,800*	19,800*	17,600*	17,000*	16,200*	13,900*	13,700*									
60	40,000*	40,000*	40,000*	35,500*	34,400*	27,700*	26,600*	25,600*	25,600*	22,900*	20,100*	19,000*	18,000*	16,500*	15,400*	14,400*	12,700*	12,700*	12,000*	10,300*	9,300*	8,200*	8,800*	7,900*		
70	40,000*	39,000*	32,400*	34,500*	31,700*	25,200*	29,400*	26,300*	22,500*	19,000*	18,200*	16,500*	15,700*	14,600*	13,900*	12,000*	11,700*	11,000*	10,300*	9,900*	9,600*	8,400*	7,600*	7,400*		
80	35,100	35,100*	30,000*	33,100*	28,500*	23,200*	28,800*	23,600*	21,900*	17,300*	18,500*	17,600*	15,000*	14,900*	14,100*	13,200*	11,300*	10,400*	10,000*	9,800*	9,700*	8,400*	7,700*	7,000*	6,900*	
90	29,800	30,000		29,400*	26,000*	22,500*	25,600*	22,500*	19,000*	15,900*	17,700*	16,800*	13,700*	14,200*	13,600*	12,000*	10,500*	10,100*	9,800*	9,500*	9,900*	8,800*	7,400*	6,800*	6,700*	
100	25,700			26,100	24,000*		23,100*	21,300*	17,700*	14,800*	18,100*	14,800*	12,700*	13,800*	13,100*	11,100*	10,200*	9,900*	9,500*	9,900*	9,600*	8,400*	7,100*	6,500*	6,400*	
110				22,800			22,500*	19,700*	16,600*	13,900*	16,200*	14,400*	11,900*	13,200*	12,600*	10,300*	9,900*	9,600*	9,100*	9,100*	8,500*	7,100*	6,500*	6,400*		
120							18,000*	15,500*			15,300*	13,400*	11,700*	11,800*	11,800*	9,600*	9,300*	8,500*	8,500*	8,300*	8,500*	6,800*	6,200*	6,100*		
130							16,600*				14,500*	12,500*		12,100*	11,000*	9,100*	9,300*	8,900*	7,900*	7,900*	6,500*	6,500*	5,800*	5,700*		
140											13,500*			11,600*	10,300*		9,000*	8,400*	7,500*	7,500*	6,200*	6,200*	5,200*	5,100*		
150														11,100*			8,400*	7,800*			8,400*	7,800*	5,800*	4,400*		
160																	7,700*				7,700*		5,100*	4,400*		
170																							4,200*			

HC-248H Tubular Jib Capacities - Open Throat Boom

Refer to notes on page 6.

Boom Length	Jib Radius	Lifting Capacities - Tubular Jib - Open Throat Boom																									
		30' jib			40' jib			50' jib			60' jib			70' jib			80' jib			90' jib			100' jib				
		5°	15°	25°	5°	15°	25°	5°	15°	25°	5°	15°	25°	5°	15°	25°	5°	15°	25°	5°	15°	25°	5°	15°	25°		
30	40,000*																										
35	40,000*	40,000*	36,000*																								
40	40,000*	40,000*	40,000*	35,900*																							
50	40,000*	40,000*	40,000*	35,500*	34,600*																						
60	40,000*	40,000*	40,000*	35,000*	35,000*	32,000*																					
70	40,000*	40,000*	39,000*	35,600*	34,600*	29,800*	31,700*																				
80	33,400	33,900	34,300	33,700	34,300	27,600*	30,900*	29,200*	28,100*	23,800*	25,500*	23,900*	20,100*	18,300*	17,100*	16,800*	13,200*	13,500*	13,500*	11,300*	10,400*	10,000*	9,200*	7,600*	7,100*	7,400*	
90	28,100	28,500	28,800	28,400	28,900	25,900*	28,600*	27,100*	22,300*	18,700*	15,800*	15,500*	10,700*	9,600*	9,200*	8,800*	5,500*	5,800*	5,800*	3,100*	3,300*	3,300*	2,800*	2,400*	2,400*	2,900*	
100	24,000	24,300	24,600	24,300	24,700	24,400*	24,500	25,000	21,300*	17,600*	14,800*	14,700*	10,700*	9,600*	9,200*	8,800*	5,500*	5,800*	5,800*	3,100*	3,300*	3,300*	2,800*	2,400*	2,400*	2,900*	
110	21,000	21,200	21,400	21,300	21,600	21,900	21,500	22,000	20,100*	16,500*	13,800*	13,400	10,000	9,000	8,600	8,200	5,000	5,300*	5,300*	2,700*	2,900*	2,900*	2,400*	2,000*	2,000*	2,500*	
120	18,300	18,500	18,600	18,500	18,800	19,100	18,800	19,200	19,100*	15,700*	13,000	12,600	9,200	8,200	7,800	7,400	4,300*	4,600*	4,600*	2,000*	2,200*	2,200*	1,800*	1,400*	1,400*	1,900*	
130	16,000	16,200	16,300	16,300	16,600	16,800	16,500	16,900	17,200	14,900*	12,200	11,800	8,400	7,400	7,000	6,600	3,500*	3,800*	3,800*	1,600*	1,800*	1,800*	1,400*	1,000*	1,000*	1,500*	
140	14,100	14,300		14,400	14,600	14,800	14,600	14,900	15,200	14,200*	11,500*	11,100*	7,700*	6,700*	6,300*	5,900*	2,800*	3,100*	3,100*	1,300*	1,500*	1,500*	1,100*	800*	800*	1,300*	
150	12,500			12,800	12,900		13,000	13,200	13,400	13,700*	11,000*	10,600*	7,200*	6,200*	5,800*	5,400*	2,300*	2,600*	2,600*	1,100*	1,300*	1,300*	900*	600*	600*	1,100*	
160	11,100			11,300			11,600	11,800		12,000	9,300*	8,900	5,500*	4,500*	4,100*	3,700*	1,600*	1,900*	1,900*	800*	900*	900*	600*	400*	400*	700*	
170							10,300			10,700	8,000	7,600	4,200*	3,200*	2,800*	2,400*	1,000*	1,300*	1,300*	700*	800*	800*	500*	300*	300*	600*	
180										9,600	7,000	6,600	3,100*	2,100*	1,700*	1,300*	500*	600*	600*	400*	500*	500*	300*	200*	200*	500*	
190											8,700	6,100*	5,100*	4,100*	3,700*	3,300*	1,200*	1,500*	1,500*	600*	700*	700*	400*	300*	300*	400*	
200																											
210																											
220																											
35	40,000*																										
40	40,000*	40,000*	36,000*																								
50	40,000*	40,000*	40,000*	35,600*	34,600*																						
60	40,000*	40,000*	40,000*	35,200*	35,200*	32,000*																					
70	40,000*	40,000*	40,000*	35,900*	34,900*	30,200*	32,000*	24,500*	24,500*	20,800*	18,200*	17,600*	12,700*	11,600*	11,200*	10,800*	7,600*	7,900*	7,900*	4,900*	5,200*	5,200*	4,300*	3,500*	3,500*	4,500*	
80	32,800	33,300	33,800	33,100	33,800	28,700*	31,400*	29,500*	22,900*	20,500*	19,100*	17,600*	12,700*	11,600*	11,200*	10,800*	7,600*	7,900*	7,900*	4,900*	5,200*	5,200*	4,300*	3,500*	3,500*	4,500*	
90	27,500	27,900	28,300	27,800	28,300	27,000*	28,000	28,700	22,300*	20,000*	18,500*	16,400*	12,500*	11,400	11,000*	10,600*	7,400*	7,700*	7,700*	4,700*	5,000*	5,000*	4,100*	3,300*	3,300*	4,300*	
100	23,300	23,700	24,000	23,600	24,100	24,500	23,900	24,500	22,300*	20,000*	18,500*	16,400*	12,500*	11,400	11,000*	10,600*	7,400*	7,700*	7,700*	4,700*	5,000*	5,000*	4,100*	3,300*	3,300*	4,300*	
110	20,300	20,600	20,900	20,600	21,000	21,400	20,900	21,400	21,100*	18,800*	17,300*	15,200*	11,300*	10,200	9,800*	9,400*	6,200*	6,500*	6,500*	3,700*	4,000*	4,000*	3,100*	2,300*	2,300*	3,300*	
120	17,600	17,900	18,100	17,900	18,300	18,600	18,200	18,600	19,000	16,400*	14,900*	12,800*	9,000*	8,000*	7,600*	7,200*	4,000*	4,300*	4,300*	3,100*	3,400*	3,400*	2,500*	1,700*	1,700*	2,700*	
130	15,400	15,600	15,800	15,700	16,000	16,200	15,900	16,300	16,600	15,400*	14,200*	12,100*	8,300*	7,300*	6,900*	6,500*	3,300*	3,600*	3,600*	2,500*	2,800*	2,800*	1,900*	1,100*	1,100*	2,100*	
140	13,500	13,700	13,800	13,800	14,000	14,200	14,000	14,300	14,600	14,000*	12,800*	10,700*	7,000*	6,000*	5,600*	5,200*	2,100*	2,400*	2,400*	1,300*	1,600*	1,600*	1,100*	800*	800*	1,300*	
150	11,900	12,000		12,100	12,400	12,500	12,400	12,700	12,900	12,800*	11,600*	9,500*	5,800*	4,800*	4,400*	4,000*	1,900*	2,200*	2,200*	1,100*	1,400*	1,400*	1,100*	800*	800*	1,300*	
160	10,500	10,600		10,700	10,900	11,000	10,900	11,200	11,400	11,500*	10,300*	8,200*	4,500*	3,500*	3,100*	2,700*	1,600*	1,900*	1,900*	1,000*	1,300*	1,300*	1,100*	800*	800*	1,300*	
170	9,200			9,500	9,600		9,700	9,900	10,000	10,400	9,200*	7,100*	3,200*	2,200*	1,800*	1,400*	1,300*	1,300*	1,000*	900*	900*	800*	700*	700*	700*	1,300*	
180				8,400			8,600	8,800		9,000	7,800*	5,700*	2,000*	1,000*	900*	800*	700*	700*	600*	500*	500*	400*	400*	400*	400*	1,300*	
190							7,600			7,700	6,500*	4,400*	1,700*	700*	600*	500*	400*	400*	300*	300*	300*	200*	200*	200*	200*	1,300*	
200							8,800			8,900	7,700*	5,600*	1,900*	800*	700*	600*	500*	500*	400*	400*	300*	300*	200*	200*	200*	1,300*	
210							7,800			7,900	6,700*	4,600*	1,800*	700*	600*	500*	400*	400*	300*	300*	200*	200*	200*	200*	200*	1,300*	
220							7,000			7,100	5,900*	3,800*	1,500*	600*	500*	400*	300*	300*	200*	200*	200*	200*	200*	200*	200*	1,300*	
230										6,300	4,100*	1,400*	500*	400*	300*	200*	100*	100*	100*	100*	100*	100*	100*	100*	100*	1,300*	
240										5,800	3,600*	1,300*	400*	300*	200*	100*	100*	100*	100*	100*	100*	100*	100*	100*	100*	1,300*	

HC-248H Working Range



Jib Capacity Notes:

- Capacities are shown in pounds and are the maximum allowable. Capacities are based on machine standing level on firm supporting surface under ideal job conditions. Capacities are not more than 85% of the tipping loads unless marked with an asterisk.
- Capacities are for 360° swing on five outrigger jacks.
- Capacities are limited to a Link-Belt 68" x 80" (1.73 x 2.03 m) open throat tubular boom, live mast and a Link-Belt 20-ton (18 t), 24" x 32" (.61 x .81 m) cross section jib with a 17' 10" (5.44 m) high jib strut properly assembled.
- Do not swing over side until all four outrigger beams are fully extended, all five jacks are extended, until all tires are clear of the ground and machine is properly leveled on a firm supporting surface.
- Two parts of 1" (25.4 mm) diameter type "N" or "RB" wire rope is required for maximum lift.
- Capacities are for 30' (9.14 m), 40' (12.19 m), 50' (15.24 m), 60' (18.29 m), 70' (21.34 m), 80' (24.38 m), 90' (27.43 m), and 100' (30.48 m) jib lengths only.
- A jib cannot be used on the open throat boom that is longer than 240' (73.15 m).
- The least stable condition is over the side.
- A deduction must be made from the jib capacities for weight of hook block, hook, sling, grapple, load weighing devices, etc.
- When using main hook, while jib is attached, reduce boom capacities by the following values:
 - 30' (9.14 m) jib - 2,600 lbs. (1 179 kg)
 - 40' (12.19 m) jib - 3,000 lbs. (1 361 kg)
 - 50' (15.24 m) jib - 3,400 lbs. (1 542 kg)
 - 60' (18.29 m) jib - 3,800 lbs. (1 724 kg)
 - 70' (21.34 m) jib - 4,200 lbs. (1 905 kg)
 - 80' (24.38 m) jib - 4,600 lbs. (2 087 kg)
 - 90' (27.43 m) jib - 5,000 lbs. (2 268 kg)
 - 100' (30.48 m) jib - 5,400 lbs. (2 449 kg)
- Refer to all notes on applicable lifting crane capacity chart in addition to these notes.
- Capacities apply only to the machine as originally manufactured and normally equipped by Link-Belt Construction Equipment Company.

Link-Belt Construction Equipment Company

A unit of Sumitomo Construction Machinery Co., Ltd.
We are constantly improving our products and therefore reserve the right to change designs and specifications.
© Link-Belt is a registered trademark. Copyright 1993. All rights reserved.