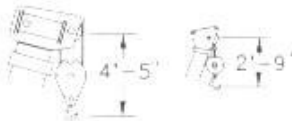


TEREX T 230

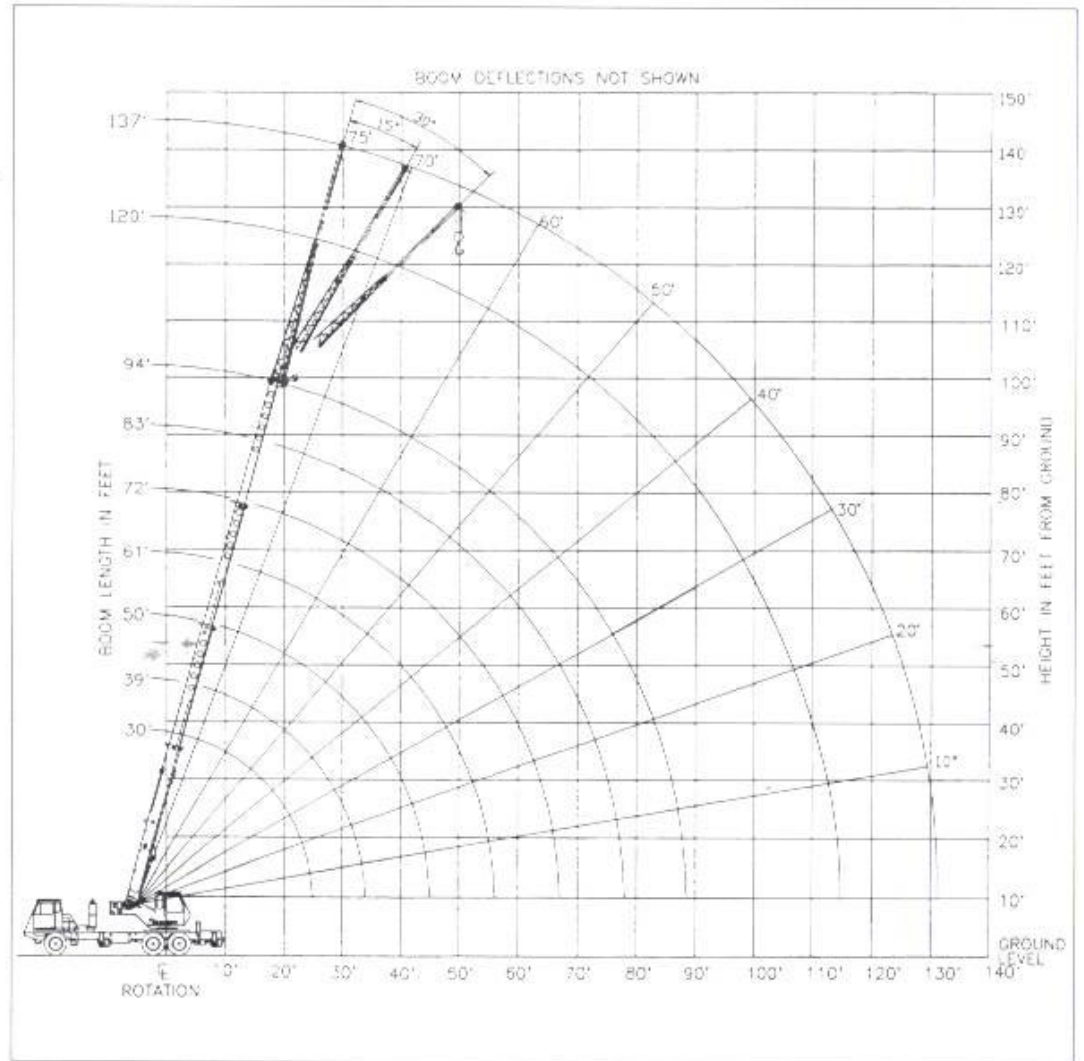
truck crane
30 ton capacity

range diagram & lifting capacities

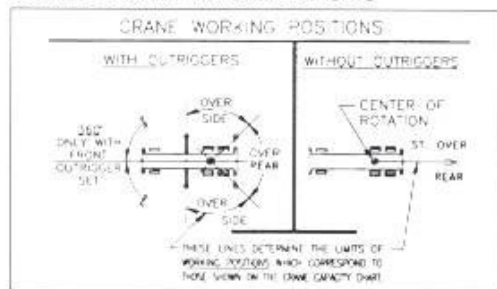


DIMENSIONS ARE FOR LARGEST FACTORY FURNISHED HOOK BLOCK AND HOOK & BALL, WITH ANTI-TWO BLOCK ACTIVATED

Range Diagram (30' - 94' boom)



CRANE WORKING CONDITIONS



REDUCTION IN MAIN BOOM CAPACITY

All Jibs in Stowed Position	0 Lbs.
Aux. Boom in Head Sheave	100 Lbs.

HOOK BLOCK WEIGHTS

Hook & Ball	239 Lbs.
25T Hook Block (2 Sheave)	682 Lbs.
30T Hook Block (3 Sheave)	670 Lbs.
40T Hook Block (4 Sheave)	690 Lbs.

Lifting Capacities – Pounds (30' – 94' boom)

MODEL T 230

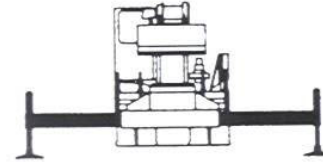
COUNTERWEIGHT:
F. BUMPER 500 LBS.
UPPERSTRUCTURE:
W/AUX. WINCH 900 LBS.
W/O AUX. WINCH 2000 LBS.

BOOM LENGTH 30-94 FT.
STABILITY PCT.
ON OUTRIGGERS 85%
ON TIRES 75%
PCSA CLASS 10-89

CAUTION: Do not use this specification sheet as a load rating chart. The format of data is not consistent with the machine chart and may be subject to change.

ON OUTRIGGERS - FULLY EXTENDED

LOAD RADIUS (FT)	BOOM LENGTH 30 FT			BOOM LENGTH 39 FT			BOOM LENGTH 50 FT			LOAD RADIUS (FT)
	LOADED BOOM ANGLE (DEG)	OVER REAR (LB)	360° (LB)	LOADED BOOM ANGLE (DEG)	OVER REAR (LB)	360° (LB)	LOADED BOOM ANGLE (DEG)	OVER REAR (LB)	360° (LB)	
10	62.5	60,000*	60,000*	69.1	46,600*	46,600*				10
12	58.1	49,600*	49,600*	65.9	39,100*	39,100*	71.4	44,500*	44,500*	12
15	51.0	38,400*	38,400*	60.9	40,000*	40,000*	67.7	38,500*	38,500*	15
20	37.0	27,000*	27,000*	51.9	27,800*	27,800*	61.4	28,300*	28,300*	20
25	13.2	20,000*	20,000*	41.7	20,900*	20,900*	54.5	21,500*	21,500*	25
30	**			28.5	16,300*	15,300	47.0	16,900*	15,900	30
35				**			38.4	13,600*	11,700	35
40							27.6	11,100	8,900	40
45							7.6	8,800	6,700	45
50							**			50
55										55
60										60
65										65
70										70
75										75
80										80
85										85



**USE THESE CHARTS ONLY
WHEN ALL OUTRIGGERS
ARE FULLY EXTENDED**

ON OUTRIGGERS - FULLY EXTENDED

LOAD RADIUS (FT)	BOOM LENGTH 61 FT			BOOM LENGTH 72 FT			BOOM LENGTH 83 FT			BOOM LENGTH 94 FT			LOAD RADIUS (FT)
	LOADED BOOM ANGLE (DEG)	OVER REAR (LB)	360° (LB)	LOADED BOOM ANGLE (DEG)	OVER REAR (LB)	360° (LB)	LOADED BOOM ANGLE (DEG)	OVER REAR (LB)	360° (LB)	LOADED BOOM ANGLE (DEG)	OVER REAR (LB)	360° (LB)	
10													10
12													12
15	71.9	36,000*	36,000*										15
20	66.9	28,700*	28,700*	70.6	27,400*	27,400*							20
25	61.6	21,800*	21,800*	66.3	22,100*	22,100*	69.6	19,000*	19,000*	72.1	15,300*	15,300*	25
30	56.1	17,300*	16,200	61.8	17,500*	16,400	65.9	15,900*	15,900*	68.8	13,100*	13,100*	30
35	50.2	14,000*	12,000	57.2	14,200*	12,200	62.0	13,800*	12,300	65.5	11,400*	11,400*	35
40	43.7	11,500	9,200	52.3	11,700	9,400	58.0	11,800	9,500	62.1	10,000*	9,600	40
45	36.2	9,200	7,200	47.0	9,500	7,400	53.8	9,600	7,500	58.6	8,800*	7,600	45
50	27.1	7,500	5,700	41.2	7,800	5,900	49.4	7,900	6,000	54.9	7,900*	6,100	50
55	12.8	6,100	4,400	34.7	6,400	4,700	44.6	6,600	4,800	51.1	6,700	4,900	55
60	**			26.7	5,300	3,700	39.4	5,500	3,900	47.0	5,600	4,000	60
65				15.3	4,400	2,900	33.5	4,600	3,100	42.7	4,700	3,200	65
70				**			26.4	3,800	2,400	37.9	3,900	2,600	70
75							16.8	3,100	1,900	32.5	3,300	2,000	75
80							**			26.2	2,700	1,500	80
85										18.0	2,200	1,100	85

** MAXIMUM CAPACITY AT 0 DEGREE BOOM ANGLE

BOOM LENGTH 30 FT			BOOM LENGTH 39 FT			BOOM LENGTH 50 FT			BOOM LENGTH 61 FT			BOOM LENGTH 72 FT			BOOM LENGTH 83 FT			BOOM LENGTH 94 FT		
LOAD RADIUS (FT)	OVER FRONT (LB)	360° (LB)	LOAD RADIUS (FT)	OVER FRONT (LB)	360° (LB)	LOAD RADIUS (FT)	OVER FRONT (LB)	360° (LB)	LOAD RADIUS (FT)	OVER FRONT (LB)	360° (LB)	LOAD RADIUS (FT)	OVER FRONT (LB)	360° (LB)	LOAD RADIUS (FT)	OVER FRONT (LB)	360° (LB)	LOAD RADIUS (FT)	OVER FRONT (LB)	360° (LB)
25.6	19,200*	19,200*	34.3	13,200*	11,300	45.3	8,600	6,600	56.3	5,700	4,100	67.3	3,900	2,500	78.3	2,700	1,500	89.3	1,800	700

Lifting Capacities – Pounds (30' – 94' boom)

MODEL T 230

COUNTERWEIGHT F BUMPER 500 LBS
UPPERSTRUCTURE W/AUX WINCH 900 LBS
W/O AUX WINCH 2000 LBS

BOOM LENGTH 30-94 FT
STABILITY PCT ON OUTRIGGERS 85%
ON TIRES 75%
PCSA CLASS 10-89

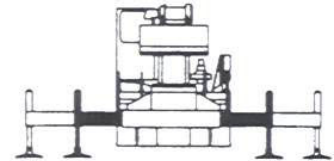
CAUTION: Do not use this specification sheet as a load rating chart. The format of data is not consistent with the machine chart and may be subject to change.

ON OUTRIGGERS - MID POSITION

LOAD RADIUS (FT)	BOOM LENGTH 30 FT		BOOM LENGTH 39 FT		BOOM LENGTH 50 FT		BOOM LENGTH 61 FT		BOOM LENGTH 72 FT		BOOM LENGTH 83 FT		BOOM LENGTH 94 FT		LOAD RADIUS (FT)
	LOADED BOOM ANGLE (DEG)	360° (LB)	LOADED BOOM ANGLE (DEG)	360° (LB)	LOADED BOOM ANGLE (DEG)	360° (LB)	LOADED BOOM ANGLE (DEG)	360° (LB)	LOADED BOOM ANGLE (DEG)	360° (LB)	LOADED BOOM ANGLE (DEG)	360° (LB)	LOADED BOOM ANGLE (DEG)	360° (LB)	
10	62.5	60,000*	69.1	46,600*											10
12	58.1	49,600*	65.9	46,600*	71.4	44,500*									12
15	51.0	30,000	60.9	30,800	67.7	31,400	71.9	31,700							15
20	37.0	16,100	51.9	17,000	61.4	17,500	66.9	17,800	70.6	18,000					20
25	13.2	9,700	41.7	10,700	54.5	11,300	61.6	11,600	66.3	11,700	69.6	11,900	72.1	12,000	25
30	**		28.5	7,100	47.0	7,700	56.1	8,000	61.8	8,200	65.9	8,300	68.8	8,400	30
35			**		38.4	5,300	50.2	5,700	57.2	5,900	62.0	6,000	65.5	6,100	35
40					27.6	3,700	43.7	4,000	52.3	4,300	58.0	4,400	62.1	4,500	40
45					7.6	2,400	36.2	2,800	47.0	3,100	53.8	3,200	58.6	3,300	45
50	50				**		27.1	1,800	41.2	2,100	49.4	2,300	54.9	2,400	50
55	55						12.8	1,100	34.7	1,300	44.6	1,500	51.1	1,600	55
60	60						**		26.7	700	39.4	900	47.0	1,000	60

** MAXIMUM CAPACITY AT 0 DEGREE BOOM ANGLE

LOAD RADIUS (FT)	BOOM LENGTH 30 FT		BOOM LENGTH 39 FT		BOOM LENGTH 50 FT		BOOM LENGTH 61 FT		BOOM LENGTH 72 FT		BOOM LENGTH 83 FT		BOOM LENGTH 94 FT	
	LOAD RADIUS (FT)	360° (LB)	LOAD RADIUS (FT)	360° (LB)	LOAD RADIUS (FT)	360° (LB)	LOAD RADIUS (FT)	360° (LB)	LOAD RADIUS (FT)	360° (LB)	LOAD RADIUS (FT)	360° (LB)	LOAD RADIUS (FT)	360° (LB)
25.6	9,000	34.3	4,800	45.3	2,200	56.3	800							



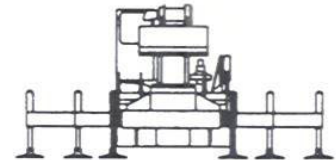
USE THESE CHARTS ONLY WHEN ALL OUTRIGGERS ARE PINNED IN MID POSITION

ON OUTRIGGERS - RETRACTED

LOAD RADIUS (FT)	BOOM LENGTH 30 FT		BOOM LENGTH 39 FT		BOOM LENGTH 50 FT		BOOM LENGTH 61 FT		BOOM LENGTH 72 FT		BOOM LENGTH 83 FT		BOOM LENGTH 94 FT		LOAD RADIUS (FT)
	LOADED BOOM ANGLE (DEG)	360° (LB)	LOADED BOOM ANGLE (DEG)	360° (LB)	LOADED BOOM ANGLE (DEG)	360° (LB)	LOADED BOOM ANGLE (DEG)	360° (LB)	LOADED BOOM ANGLE (DEG)	360° (LB)	LOADED BOOM ANGLE (DEG)	360° (LB)	LOADED BOOM ANGLE (DEG)	360° (LB)	
10	62.5	21,900	69.1	22,700											10
12	58.1	15,300	65.9	16,000	71.4	16,500									12
15	51.0	9,600	60.9	10,400	67.7	10,900	71.9	11,100							15
20	37.0	4,700	51.9	5,500	61.4	6,100	66.9	6,300	70.6	6,500					20
25	13.2	2,000	41.7	2,900	54.5	3,400	61.6	3,800	66.3	3,900	69.6	4,000	72.1	4,100	25
30	**		28.5	1,200	47.0	1,800	56.1	2,100	61.8	2,300	65.9	2,400	68.8	2,500	30
35			**		38.4	600	50.2	1,000	57.2	1,200	62.0	1,300	65.5	1,400	35

** MAXIMUM CAPACITY AT 0 DEGREE BOOM ANGLE

LOAD RADIUS (FT)	BOOM LENGTH 30 FT		BOOM LENGTH 39 FT		BOOM LENGTH 50 FT		BOOM LENGTH 61 FT		BOOM LENGTH 72 FT		BOOM LENGTH 83 FT		BOOM LENGTH 94 FT	
	LOAD RADIUS (FT)	360° (LB)	LOAD RADIUS (FT)	360° (LB)	LOAD RADIUS (FT)	360° (LB)	LOAD RADIUS (FT)	360° (LB)	LOAD RADIUS (FT)	360° (LB)	LOAD RADIUS (FT)	360° (LB)	LOAD RADIUS (FT)	360° (LB)
25.6	1,600													



USE THESE CHARTS WHEN ALL OUTRIGGER BEAMS ARE NOT IN EITHER THE MID OR FULLY EXTENDED POSITION

Lifting Capacities – Pounds (30' – 94' boom)

MODEL T 230

COUNTERWEIGHT: BOOM LENGTH 30-94 FT.
 F. BUMPER 500 LBS. STABILITY PCT.
 UPPERSTRUCTURE: ON OUTRIGGERS 85%
 W/AUX. WINCH 900 LBS. ON TIRES 75%
 W/O AUX. WINCH 2000 LBS. PCSA CLASS 10-89

CAUTION: Do not use this specification sheet as a load rating chart. The format of data is not consistent with the machine chart and may be subject to change.

SIDE STOW JIB ON FULLY EXTENDED OUTRIGGERS

LOADED BOOM ANGLE (DEG)	26 FT OFFSETABLE JIB									43 FT OFFSETABLE JIB									LOADED BOOM ANGLE (DEG)
	0° OFFSET			15° OFFSET			30° OFFSET			0° OFFSET			15° OFFSET			30° OFFSET			
	LOAD RADIUS (REF) (FT)	REAR ONLY (LB)	360° (LB)	LOAD RADIUS (REF) (FT)	REAR ONLY (LB)	360° (LB)	LOAD RADIUS (REF) (FT)	REAR ONLY (LB)	360° (LB)	LOAD RADIUS (REF) (FT)	REAR ONLY (LB)	360° (LB)	LOAD RADIUS (REF) (FT)	REAR ONLY (LB)	360° (LB)	LOAD RADIUS (REF) (FT)	REAR ONLY (LB)	360° (LB)	
75	35	9,100*	9,100*	40	7,400*	7,400*	45	5,600*	5,600*	41	5,100*	5,100*	50	3,400*	3,400*	62	2,700*	2,700*	75
73	39	8,600*	8,600*	43	6,800*	6,800*	49	5,300*	5,300*	45	4,800*	4,800*	54	3,300*	3,300*	65	2,700*	2,700*	73
71	43	8,100*	8,100*	47	6,300*	6,300*	52	5,000*	5,000*	49	4,500*	4,500*	58	3,200*	3,200*	68	2,600*	2,600*	71
68	49	7,300*	6,900*	52	5,600*	5,200*	56	4,500*	4,500*	54	4,100*	4,100*	64	3,000*	3,000*	72	2,500*	2,500*	68
65	54	6,300*	5,700*	57	5,100*	4,300*	61	4,100*	3,900*	60	3,800*	3,800*	70	2,900*	2,900*	77	2,500*	2,500*	65
62	60	5,500*	4,800*	62	4,600*	3,500*	66	3,700*	3,100*	67	3,600*	3,600*	74	2,800*	2,800*	82	2,400*	2,400*	62
59	64	4,800*	4,000*	67	4,100*	2,800*	71	3,400*	2,600*	75	3,400*	3,000*	81	2,700*	2,700*	88	2,400*	2,400*	59
55	70	4,100*	3,000*	73	3,600*	2,100*	78	3,000*	1,900*	82	3,100*	2,300*	89	2,600*	2,100*	95	2,300*	1,900*	55
51	76	3,500*	2,300*	79	3,000*	1,400*	84	2,800*	1,400*	88	2,900*	1,700*	96	2,300*	1,500*	100	2,300*	1,400*	51
47	82	3,000*	1,700*	86	2,500*	900*	89	2,300*	900*	95	2,600*	1,300*	101	1,900*	1,100*	105	1,900*	1,100*	47
43	87	2,600*	1,200*	91	2,000*	400*	93	1,900*	500*	101	2,200*	900*	107	1,600*	800*	110	1,500*	800*	43
38	93	2,200*	700*	97	1,600*		98	1,500*		108	1,800*		113	1,300*		115	1,200*		38
32	100	1,600*	200*	102	1,100*		104	1,100*		116	1,300*		119	900*		121	900*		32
25	106	1,000*		108	800*					125	900*		126	600*					25

NOTES FOR JIB CAPACITIES

- A. For all boom lengths less than the maximum with a jib erected, the rated loads are determined by boom angle only in the appropriate column.
- B. For boom angle not shown, use the capacity of the next lower boom angle.
- C. Listed radii are for extended main boom only.

ON TIRES

RADIUS (FT)	MAX BOOM LENGTH (FT)	BOOM STRAIGHT OVER REAR 0 TO 2 1/2 MPH
10	30	13,400
12	30	11,300
15	39	8,700
20	39	5,300
25	50	3,100
30	50	2,000
35	50	1,000

NOTES FOR ON TIRE CAPACITIES

- A. For Pick and Carry operations, boom must be centered over the front of the crane with swing brake and lock engaged. Use minimum boom point height and keep load close to ground surface.
- B. The load should be restrained from swinging. NO ON TIRE OPERATION WITH JIB ERECTED.
- C. Without outriggers, never maneuver the boom beyond listed load radii for applicable tires to ensure stability.
- D. Creep speed is crane movement of less than 200 Ft (61m) in a 30 minute period and not exceeding 1.0 mph (1.6 km/h).
- E. Refer to General Notes for additional information.

MAXIMUM PERMISSIBLE HOIST LINE LOAD

LINE PARTS	1	2	3	4	5	6	7
MAX. LOAD	9,080	18,160	27,240	36,320	45,400	54,480	63,560
BOOM HEAD	2	3-D	2-3	1-4-D	2-3-4	2-3-4-D	1-2-3-4
HOOK BLOCK	D	3	3-D	1-4	2-3-D	2-3-4	2-3-4-D
	WIRE ROPE: 5/8" ROTATION RESISTANT COMPACTED STRAND 18X19 OR 19X19 MINIMUM BREAKING STRENGTH - 22.7 TONS 5/8" 6X19 OR 6X37 IWRC IPS PREFORMED RIGHT REGULAR LAY MINIMUM BREAKING STRENGTH - 17.9 TONS						

Lifting Capacities – Pounds (30'– 94' boom and heavy-lift package)

MODEL T 230

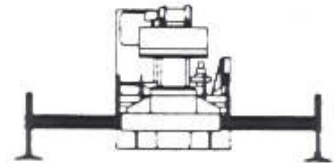
COUNTERWEIGHT
F. BUMPER 1850 LBS.
UPPERSTRUCTURE
W/AUX. WINCH 6100 LBS.
W/O AUX. WINCH 7200 LBS.

BOOM LENGTH 30-94 FT
STABILITY PCT
ON OUTRIGGERS 85%
ON TIRES 75%
PCSA CLASS 10-118

CAUTION: Do not use this specification sheet as a load rating chart. The format of data is not consistent with the machine chart and may be subject to change.

ON OUTRIGGERS - FULLY EXTENDED

LOAD RADIUS (FT)	BOOM LENGTH 30 FT			BOOM LENGTH 39 FT			BOOM LENGTH 50 FT			LOAD RADIUS (FT)
	LOADED BOOM ANGLE (DEG)	OVER REAR (LB)	360° (LB)	LOADED BOOM ANGLE (DEG)	OVER REAR (LB)	360° (LB)	LOADED BOOM ANGLE (DEG)	OVER REAR (LB)	360° (LB)	
10	62.5	60,000*	60,000*	69.1	46,600*	46,600*				10
12	58.1	50,100*	50,100*	65.9	46,600*	46,600*	71.4	44,500*	44,500*	12
15	51.0	40,100*	40,100*	60.9	40,000*	40,000*	67.7	38,500*	38,500*	15
20	37.0	29,000*	29,000*	51.9	29,800*	29,800*	61.4	30,000*	30,000*	20
25	13.2	21,700*	21,700*	41.7	22,600*	22,600*	54.5	23,100*	23,100*	25
30	**			28.5	17,700*	17,700*	47.0	18,300*	18,300*	30
35				**			38.4	14,800*	14,800*	35
40							27.6	12,100*	11,800*	40
45							7.6	10,000*	9,300*	45
50							**			50
55										55
60										60
65										65
70										70
75										75
80										80
85										85



**USE THESE CHARTS ONLY
WHEN ALL OUTRIGGERS
ARE FULLY EXTENDED**

ON OUTRIGGERS - FULLY EXTENDED

LOAD RADIUS (FT)	BOOM LENGTH 61 FT			BOOM LENGTH 72 FT			BOOM LENGTH 83 FT			BOOM LENGTH 94 FT			LOAD RADIUS (FT)
	LOADED BOOM ANGLE (DEG)	OVER REAR (LB)	360° (LB)	LOADED BOOM ANGLE (DEG)	OVER REAR (LB)	360° (LB)	LOADED BOOM ANGLE (DEG)	OVER REAR (LB)	360° (LB)	LOADED BOOM ANGLE (DEG)	OVER REAR (LB)	360° (LB)	
10													10
12													12
15	71.9	36,000*	36,000*										15
20	66.9	29,500*	29,500*	70.6	27,400*	27,400*							20
25	61.6	23,500*	23,500*	66.3	23,100*	23,100*	69.6	19,000*	19,000*	72.1	15,300*	15,300*	25
30	56.1	18,600*	18,600*	61.8	18,900*	18,900*	65.9	15,900*	15,900*	68.8	13,100*	13,100*	30
35	50.2	15,100*	15,100*	57.2	15,400*	15,400*	62.0	13,800*	13,800*	65.5	11,400*	11,400*	35
40	43.7	12,500*	12,200*	52.3	12,800*	12,400*	58.0	12,000*	12,000*	62.1	10,000*	10,000*	40
45	36.2	10,500*	9,800*	47.0	10,700*	9,900*	53.8	10,500*	10,100*	58.6	8,800*	8,800*	45
50	27.1	8,800*	7,900*	41.2	9,150*	8,100*	49.4	9,300*	8,200*	54.9	7,900*	7,900*	50
55	12.8	7,400*	6,400*	34.7	7,700*	6,700*	44.6	7,900*	6,800*	51.1	7,100*	6,900*	55
60	**			26.7	6,600*	5,500*	39.4	6,800*	5,700*	47.0	6,400*	5,800*	60
65				15.3	5,600*	4,500*	33.5	5,900*	4,800*	42.7	5,800*	4,900*	65
70				**			26.4	5,000*	3,900*	37.9	5,200*	4,100*	70
75							16.8	4,300*	3,300*	32.5	4,500*	3,400*	75
80							**			26.2	3,900*	2,800*	80
85										19.0	3,300*	2,300*	85

** MAXIMUM CAPACITY AT 0 DEGREE BOOM ANGLE

BOOM LENGTH 30 FT			BOOM LENGTH 39 FT			BOOM LENGTH 50 FT			BOOM LENGTH 61 FT			BOOM LENGTH 72 FT			BOOM LENGTH 83 FT			BOOM LENGTH 94 FT		
LOAD RADIUS (FT)	OVER FRONT (LB)	360° (LB)	LOAD RADIUS (FT)	OVER FRONT (LB)	360° (LB)	LOAD RADIUS (FT)	OVER FRONT (LB)	360° (LB)	LOAD RADIUS (FT)	OVER FRONT (LB)	360° (LB)	LOAD RADIUS (FT)	OVER FRONT (LB)	360° (LB)	LOAD RADIUS (FT)	OVER FRONT (LB)	360° (LB)	LOAD RADIUS (FT)	OVER FRONT (LB)	360° (LB)
25.6	20,800*	20,800*	34.3	14,400*	14,400*	45.3	9,900*	9,100	56.3	7,100*	6,000	67.3	5,200*	4,100	78.3	3,800*	2,800	89.3	2,800*	1,900

Lifting Capacities – Pounds (30'– 94' boom and heavy-lift package)

MODEL T 230

COUNTERWEIGHT
F. BUMPER 1850 LBS
UPPERSTRUCTURE
W/O AUX WINCH 5100 LBS
W/O AUX WINCH 7200 LBS

BOOM LENGTH 30-94 FT
STABILITY PCT
ON OUTRIGGERS 85%
ON TIRES 75%
PCSA CLASS 10-118



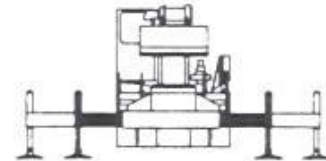
CAUTION: Do not use this specification sheet as a load rating chart. The format of data is not consistent with the machine chart and may be subject to change.

ON OUTRIGGERS - MID POSITION

LOAD RADIUS (FT)	BOOM LENGTH 30 FT		BOOM LENGTH 39 FT		BOOM LENGTH 50 FT		BOOM LENGTH 61 FT		BOOM LENGTH 72 FT		BOOM LENGTH 83 FT		BOOM LENGTH 94 FT		LOAD RADIUS (FT)
	LOADED BOOM ANGLE (DEG)	360° (LB)	LOADED BOOM ANGLE (DEG)	360° (LB)	LOADED BOOM ANGLE (DEG)	360° (LB)	LOADED BOOM ANGLE (DEG)	360° (LB)	LOADED BOOM ANGLE (DEG)	360° (LB)	LOADED BOOM ANGLE (DEG)	360° (LB)	LOADED BOOM ANGLE (DEG)	360° (LB)	
10	62.5	55,700*	69.1	46,600*											10
12	58.1	50,100*	65.9	46,600*	71.4	44,500*									12
15	51.0	36,200	60.9	37,000	67.7	37,500	71.9	36,000*							15
20	37.0	20,000	51.9	21,000	61.4	21,400	66.9	21,700	70.6	21,900					20
25	13.2	12,600	41.7	13,600	54.5	14,200	61.6	14,500	66.3	14,600	69.6	14,800	72.1	14,900	25
30	**		28.5	9,400	47.0	10,100	56.1	10,300	61.8	10,500	65.9	10,600	68.8	10,700	30
35			**		38.4	7,300	50.2	7,700	57.2	7,900	62.0	8,000	65.5	8,000	35
40					27.6	5,400	43.7	5,800	52.3	6,000	58.0	6,100	62.1	6,200	40
45					7.6	3,900	36.2	4,300	47.0	4,600	53.8	4,700	58.6	4,800	45
50					**		27.1	3,200	41.2	3,500	49.4	3,600	54.9	3,700	50
55							12.8	2,300	34.7	2,600	44.6	2,800	51.1	2,900	55
60							**		26.7	1,900	39.4	2,100	47.0	2,200	60

** MAXIMUM CAPACITY AT 0 DEGREE BOOM ANGLE

LOAD RADIUS (FT)	BOOM LENGTH 30 FT		BOOM LENGTH 39 FT		BOOM LENGTH 50 FT		BOOM LENGTH 61 FT		BOOM LENGTH 72 FT		BOOM LENGTH 83 FT		BOOM LENGTH 94 FT	
	360° (LB)	RADIUS (FT)	360° (LB)	RADIUS (FT)	360° (LB)	RADIUS (FT)	360° (LB)	RADIUS (FT)	360° (LB)	RADIUS (FT)	360° (LB)	RADIUS (FT)	360° (LB)	RADIUS (FT)
25.6	11,800	34.3	6,800	45.3	3,800	56.3	2,100							



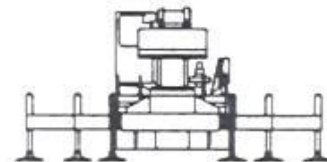
USE THESE CHARTS ONLY WHEN ALL OUTRIGGERS ARE PINNED IN MID POSITION

ON OUTRIGGERS - RETRACTED

LOAD RADIUS (FT)	BOOM LENGTH 30 FT		BOOM LENGTH 39 FT		BOOM LENGTH 50 FT		BOOM LENGTH 61 FT		BOOM LENGTH 72 FT		BOOM LENGTH 83 FT		BOOM LENGTH 94 FT		LOAD RADIUS (FT)
	LOADED BOOM ANGLE (DEG)	360° (LB)	LOADED BOOM ANGLE (DEG)	360° (LB)	LOADED BOOM ANGLE (DEG)	360° (LB)	LOADED BOOM ANGLE (DEG)	360° (LB)	LOADED BOOM ANGLE (DEG)	360° (LB)	LOADED BOOM ANGLE (DEG)	360° (LB)	LOADED BOOM ANGLE (DEG)	360° (LB)	
10	62.5	31,000	69.1	31,700											10
12	58.1	22,100	65.9	22,800	71.4	23,300									12
15	51.0	14,500	60.9	15,400	67.7	15,800	71.9	16,100							15
20	37.0	8,000	51.9	8,800	61.4	9,400	66.9	9,700	70.6	9,800					20
25	13.2	4,400	41.7	5,400	54.5	5,900	61.6	6,200	66.3	6,400	69.6	6,500	72.1	6,600	25
30	**		28.5	3,100	47.0	3,700	56.1	4,100	61.8	4,300	65.9	4,400	68.8	4,500	30
35			**		38.4	2,200	50.2	2,610	57.2	2,800	62.0	2,900	65.5	3,000	35
40									52.3	1,700	58.0	1,800	62.1	2,000	40

** MAXIMUM CAPACITY AT 0 DEGREE BOOM ANGLE

LOAD RADIUS (FT)	BOOM LENGTH 30 FT		BOOM LENGTH 39 FT		BOOM LENGTH 50 FT		BOOM LENGTH 61 FT		BOOM LENGTH 72 FT		BOOM LENGTH 83 FT		BOOM LENGTH 94 FT	
	360° (LB)	RADIUS (FT)	360° (LB)	RADIUS (FT)	360° (LB)	RADIUS (FT)	360° (LB)	RADIUS (FT)	360° (LB)	RADIUS (FT)	360° (LB)	RADIUS (FT)	360° (LB)	RADIUS (FT)
25.6	4,000	34.3	1,700											



USE THESE CHARTS WHEN ALL OUTRIGGER BEAMS ARE NOT IN EITHER THE MID OR FULLY EXTENDED POSITION

Lifting Capacities – Pounds (30'– 94' boom and heavy-lift package)

MODEL T 230

COUNTERWEIGHT
F. BUMPER 1850 LBS.
UPPER STRUCTURE
W/AUX. WINCH 6100 LBS.
W/O AUX. WINCH 7200 LBS.

BOOM LENGTH 30-94 FT.
STABILITY PCT.
ON OUTRIGGERS 25%
ON TIRES 75%
PCSA CLASS 10-11B

CAUTION: Do not use this specification sheet as a load rating chart. The format of data is not consistent with the machine chart and may be subject to change.

SIDE STOW JIB ON FULLY EXTENDED OUTRIGGERS

LOADED BOOM ANGLE (DEG)	26 FT OFFSETABLE JIB									43 FT OFFSETABLE JIB									LOADED BOOM ANGLE (DEG)
	0° OFFSET			15° OFFSET			20° OFFSET			0° OFFSET			15° OFFSET			30° OFFSET			
	LOAD RADIUS (REF) (FT)	REAR ONLY (LB)	360° (LB)	LOAD RADIUS (REF) (FT)	REAR ONLY (LB)	360° (LB)	LOAD RADIUS (REF) (FT)	REAR ONLY (LB)	360° (LB)	LOAD RADIUS (REF) (FT)	REAR ONLY (LB)	360° (LB)	LOAD RADIUS (REF) (FT)	REAR ONLY (LB)	360° (LB)	LOAD RADIUS (REF) (FT)	REAR ONLY (LB)	360° (LB)	
75	35	9,100*	9,100*	40	7,400*	7,400*	45	5,600*	5,600*	41	5,100*	5,100*	50	3,400*	3,400*	62	2,700*	2,700*	75
73	39	8,600*	8,600*	43	6,800*	6,800*	43	5,300*	5,300*	45	4,800*	4,800*	54	3,300*	3,300*	65	2,700*	2,700*	73
71	43	8,100*	8,100*	47	6,300*	6,300*	52	5,000*	5,000*	49	4,500*	4,500*	58	3,200*	3,200*	69	2,600*	2,600*	71
69	49	7,300*	7,300*	52	5,600*	5,600*	56	4,500*	4,500*	54	4,100*	4,100*	64	3,000*	3,000*	72	2,500*	2,500*	69
65	54	6,300*	6,300*	57	5,100*	5,100*	61	4,100*	4,100*	60	3,900*	3,800*	70	2,900*	2,900*	77	2,500*	2,500*	65
62	60	5,500*	5,500*	62	4,600*	4,600*	66	3,700*	3,700*	67	3,600*	3,600*	74	2,800*	2,800*	82	2,400*	2,400*	62
59	64	4,800*	4,800*	67	4,100*	4,100*	71	3,400*	3,400*	75	3,400*	3,400*	81	2,700*	2,700*	88	2,400*	2,400*	59
55	70	4,100*	3,900*	73	3,600*	3,600*	78	3,300*	3,000*	82	3,100*	3,000*	89	2,600*	2,500*	95	2,300*	2,300*	55
51	76	3,700*	3,200*	79	3,200*	3,000*	84	2,900*	2,800*	88	2,900*	2,800*	96	2,500*	2,200*	100	2,300*	2,300*	51
47	82	3,200*	2,700*	86	2,900*	2,500*	89	2,500*	2,500*	95	2,600*	2,200*	101	2,400*	1,900*	105	2,200*	1,900*	47
43	87	2,800*	2,200*	91	2,600*	2,100*	93	2,400*	2,100*	101	2,300*	1,800*	107	2,200*	1,600*	110	2,200*	1,600*	43
38	93	2,200*	1,800*	97	2,100*	1,700*	98	2,000*	1,600*	108	2,000*	1,400*	113	2,000*	1,300*	115	1,900*	1,300*	38
32	100	1,900*	1,300*	102	1,900*	1,300*	104	1,800*	1,200*	116	1,700*	1,000*	119	1,700*	1,000*	121	1,700*	1,000*	32
25	106	1,600*	900	108	1,600*	900				125	1,200*	700	126	1,200*	600				25
17	112	1,400*	500	113	1,400*	500				132	800	500	133	800					17

NOTES FOR JIB CAPACITIES

- For all boom lengths less than the maximum with a jib erected, the rated loads are determined by boom angle only in the appropriate column.
- For boom angle not shown, use the capacity of the next lower boom angle.
- Listed radii are for extended main boom only.

ON TIRES

RADIUS (FT)	MAX BOOM LENGTH (FT)	BOOM STRAIGHT OVER REAR 0 TO 2 1/2 MPH
10	30	18,900
12	30	15,800
15	39	12,100
20	39	7,800
25	50	5,300
30	50	3,600
35	50	2,600
40	50	1,800

NOTES FOR ON TIRE CAPACITIES

- For Pick and Carry operations, boom must be centered over the front outrigger with swing brake and lock engaged. Use minimum boom point height and keep load close to ground surface.
- The load should be restrained from swinging. NO ON TIRE OPERATION WITH JIB ERECTED.
- Without outriggers, never maneuver the boom beyond listed load fact for applicable tires to ensure stability.
- Creep speed is crane movement of less than 200 Ft (61m) in a 30 minute period and not exceeding 1.0 mph (1.6 km/h).
- Refer to General Notes for additional information.

MAXIMUM PERMISSIBLE HOIST LINE LOAD

LINE PARTS	1	2	3	4	5	6	7
MAX LOAD	9,090	18,160	27,240	36,320	45,400	54,480	63,560
BOOM HEAD	2	3-D	2-3	1-4-D	2-3-4	2-3-4-D	1-2-3-4
HOOK BLOCK	D	3	3-D	1-4	2-3-D	2-3-4	2-3-4-D
	WIRE ROPE: 5/8" ROTATION RESISTANT COMPACTED STRAND, 18X19 OR 19X19 MINIMUM BREAKING STRENGTH - 22.7 TONS 5/8" 6X19 OR 6X37 IWRC IPS PREFORMED RIGHT REGULAR LAY MINIMUM BREAKING STRENGTH - 17.9 TONS						

GENERAL NOTES

GENERAL

1. Rated loads as shown on Lift Charts pertain to this machine as originally manufactured and equipped. Modifications to the machine or use of optional equipment other than that specified can result in a reduction of capacity.
2. Construction equipment can be hazardous if improperly operated or maintained. Operation and maintenance of this machine shall be in compliance with the information in the Operator's, Parts and Safety Manuals supplied with this machine. If these manuals are missing, order replacements from the manufacturer through your distributor.
3. These warnings do not constitute all of the operating conditions for the crane. The operator and job site supervision must read the OPERATORS MANUAL, CIMA SAFETY MANUAL, APPLICABLE OSHA REGULATIONS, AND SOCIETY OF MECHANICAL ENGINEERS (ASME) SAFETY STANDARDS FOR CRANES.
4. This crane and its load ratings are in accordance with POWER CRANE & SHOVEL ASSOCIATION, STANDARD NO. 4, SAE CRANE LOAD STABILITY TEST CODE J765A, SAE METHOD OF TEST FOR CRANE STRUCTURE J1063 AND APPLICABLE SAFETY CODE FOR CRANES, DERRICKS AND HOISTS, ASME/ANSI B30.5.

DEFINITIONS

1. **LOAD RADIUS** – The horizontal distance from the axis of rotation before loading to the center of the vertical hoist line or tackle with a load applied.
2. **LOADED BOOM ANGLE** – It is the angle between the boom base section and the horizontal, after lifting the rated load at the rated radius. The boom angle before loading should be greater to account for deflections. The loaded boom angle combined with boom length give only an approximation of the operating radius.
3. **WORKING AREA** – Areas measured in a circular arc about the centerline of rotation as shown in the diagram.
4. **FREELY SUSPENDED LOAD** – Load hanging free with no direct external force applied except by the hoist rope.
5. **SIDE LOAD** – Horizontal force applied to the lifted load either on the ground or in the air.
6. **NO LOAD STABILITY LIMIT** – The stability limit radius shown on the range diagrams is the radius beyond which it is not permitted to position the boom, when the boom angle is less than the minimum shown on the applicable load chart, because the machine can overturn without any load.

SET-UP

1. Crane load ratings are based on the crane being leveled and standing on a firm, uniform supporting surface.
2. Crane load ratings on outriggers are based on all outrigger beams being fully extended or in the case of partial extension ratings mechanically pinned in the appropriate position, and the tires free of the supporting surface.
3. Crane load ratings on tires depend on appropriate inflation pressure and the tire conditions. Caution must be exercised when increasing air pressures in tires. Consult Operator's Manual for precautions.
4. Use of jibs, lattice-type boom extensions, or fourth section pullouts extended is not permitted for pick and carry operations.
5. Consult appropriate section of the Operator's and Service Manual for more exact description of hoist line reeving.
6. The use of more parts of line than required by the load may result in having insufficient rope to allow the hook block to reach the ground.
7. Properly maintained wire rope is essential for safe crane operation. Consult Operator's Manual for proper maintenance and inspection requirements.

8. When spin-resistant wire rope is used, the allowable rope loading shall be the breaking strength divided by five (5), unless otherwise specified by the wire rope manufacturer.

OPERATION

1. **CRANE LOAD RATINGS MUST NOT BE EXCEEDED. DO NOT ATTEMPT TO TIP THE CRANE TO DETERMINE ALLOWABLE LOADS.**
2. When either radius or boom length, or both, are between listed values, the smaller of the two listed load ratings shall be used.
3. Do not operate at longer radii than those listed on the applicable load rating chart (cross hatched areas shown on range diagrams).
4. The boom angles shown on the Capacity Chart give an approximation of the operating radius for a specified boom length. The boom angle, before loading, should be greater to account for boom deflection. It may be necessary to retract the boom if maximum boom angle is insufficient to maintain rated radius.
5. Power telescoping boom sections must be extended equally.
6. Rated loads include the weight of hook block, slings, and auxiliary lifting devices. Their weights shall be subtracted from the listed rated load to obtain the net load that can be lifted.
When lifting over the jib the weight of any hook block, slings, and auxiliary lifting devices at the boom head must be added to the load.
When jibs are erected but unused add two (2) times the weight of any hook block, slings, and auxiliary lifting devices at the jib head to the load.
7. Rated loads do not exceed 85% on outriggers or 75% on tires, of the tipping load as determined by SAE Crane Stability Test Code J765a. Rated loads for partially extended outriggers are determined from the formula, $\text{Rated Load} = (\text{Tipping Load} - 0.1 \times \text{Tip Reaction}) / 1.25$. Structural strength ratings in chart are indicated with an asterisk (*).
8. Rated loads are based on freely suspended loads. No attempt shall be made to drag a load horizontally on the ground in any direction.
9. The user shall operate at reduced ratings to allow for adverse job conditions, such as: Soft or uneven ground, out of level conditions, high winds, side loads, pendulum action, jerking or sudden stopping of loads, hazardous conditions, experience of personnel, two machine lifts, traveling with loads, electric wires, etc., (side pull on boom or jib is hazardous). Derating of the cranes lifting capacity is required when wind speed exceeds 20 MPH. The center of the lifted load must never be allowed to move more than 3' feet off the center line of the base boom section due to the effects of wind, inertia, or any combination of the two.
Use 2 feet off the center line of the base boom for a two section boom, 3 feet for a three section boom, or 4 feet for a four section boom.
10. The maximum load which can be telescoped is not definable, because of variations in loadings and crane maintenance, but it is permissible to attempt retraction and extension if load ratings are not exceeded.
11. Load ratings are dependent upon the crane being maintained according to manufacturer's specifications.
12. It is recommended that load handling devices, including hooks, and hook blocks, be kept away from boom head at all times.
13. **FOR TRUCK ONLY:** 360° capacities apply only to machines equipped with a front outrigger jack and all five (5) outrigger jacks properly set. If the front (5th) outrigger jack is not properly set, the work area is restricted to the over side and over rear areas as shown on the Crane Working Positions diagram. Use the 360° load ratings in the overside work areas.

WE RESERVE THE RIGHT TO AMEND THESE SPECIFICATIONS AT ANY TIME WITHOUT NOTICE. THE ONLY WARRANTY APPLICABLE IS OUR STANDARD WRITTEN WARRANTY APPLICABLE TO THE PARTICULAR PRODUCT AND SALE. WE MAKE NO OTHER WARRANTY, EXPRESSED OR IMPLIED.

 **TEREX CRANES**
Waverly, Iowa 

TEREX CRANES, INC.
106 12th Street S.E. • Waverly, IA 50677-9466 USA
(319) 352-3920 • FAX: (319) 352-5727