



# 238

CYLAB  
HSL  
SERIES

150 U.S. ton | 136.08 metric ton  
Lattice Boom Crawler Crane

- Tier 4 Final Cummins QSB6.7 270hp (201 kw)  
(high sulphur version available)
- Standard freefall wet brake winches with automatic mode,  
26mm wire rope front & rear
- 30 ton (27.2 mt) jib
- Hook and pin side frames
- HSL-style operator's cab
- Modular counterweight design
- Range control
- Upper guard rails
- Rear view camera with color monitor
- Bullet-proof hydraulic pilot-operated controls
- BIG capacities
- Luffer-ready

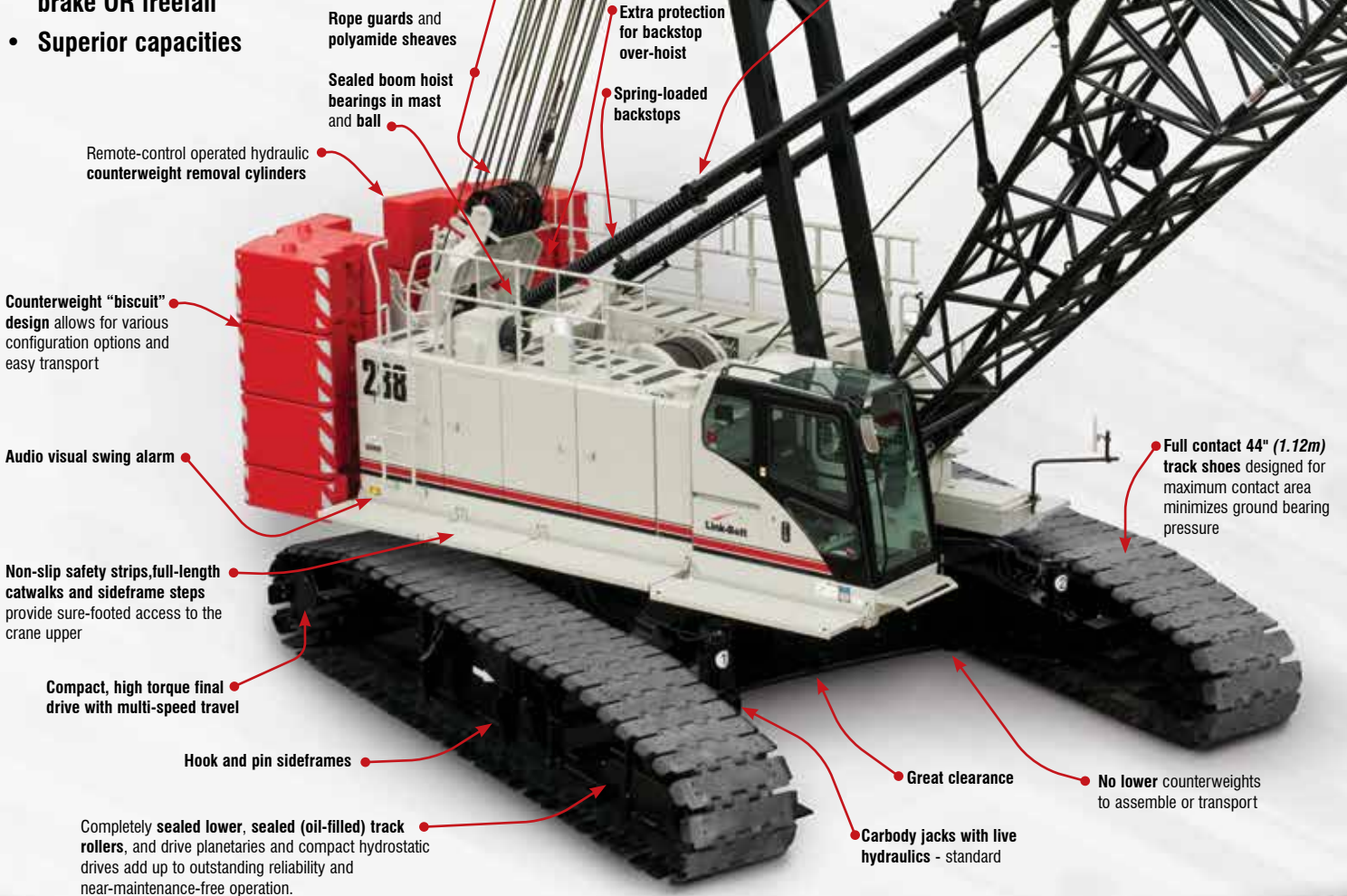


# 238 HYLAR B HSL SERIES

150 ton | 136.08 mt  
Lattice Boom Crawler Crane

## Heavy-duty power for the most demanding jobs

- Transport complete crane with base section and optional 10' (3.05 m) rigging insert, less sideframes and counterweight under 90,000 lbs (40 823 kg)
- 7-piece counterweight system design with innovative removal system
- Latest rated capacity limiter with color graphics
- Power-up/down with auto brake OR freefall
- Superior capacities





Wire rope pendant storage

- Robust engine with **total horsepower control** provides unbeatable line speeds under load
- **Six pump** main hydraulic package provides smooth performance
- **Matched front & rear drum** performance with 46,924 lbs (21 285 kg) line pull
- **Multi-disk wet brakes** for smooth load control. Minimal no friction drag from planetary.
- **26 mm rope** on front and rear hoists with automatic pawl and grooved lagging
- **True gravity freefall** for cycle-type work, pile driving
- **Dual swing drives** provide smooth swing control
- **High travel torque**

### Options include:

- **Third drum** features with controlled free spooling capability for pile driving applications or power up/power down as auxiliary hoist line
- **Third drum power-up/power-down** with auto-brake provides auxiliary 3rd line for conventional and luffer use.



Excellent access for all routine engine and hydraulic maintenance





Operator's cab provides ergonomic comfort and control

## Awesome air, comfort & control at your fingertips

The spacious HYLAB cab is ergonomically designed for maximum visibility, operating comfort and control with these standard features:

- **18,000 BTU air conditioning** and **19,000 BTU heating** run through upper and lower vents
- **Rating capacity limiter** with load cell located in boom hoisted dead end
- **Pilot-operated armchair controls** with adjustable sliding console
- **Foot throttle pedal**
- **Travel levers** conveniently located on right hand console

Operator's cab console features include:

- Complete **engine monitoring**
- **Rear view monitoring**
- **Free-fall mode** indicator
- Anti-two block and boom hoist **override switches**
- **Limit alarm indicator light**
- **System override switch** and indicator light
- **Front, rear and third drum lock switch**

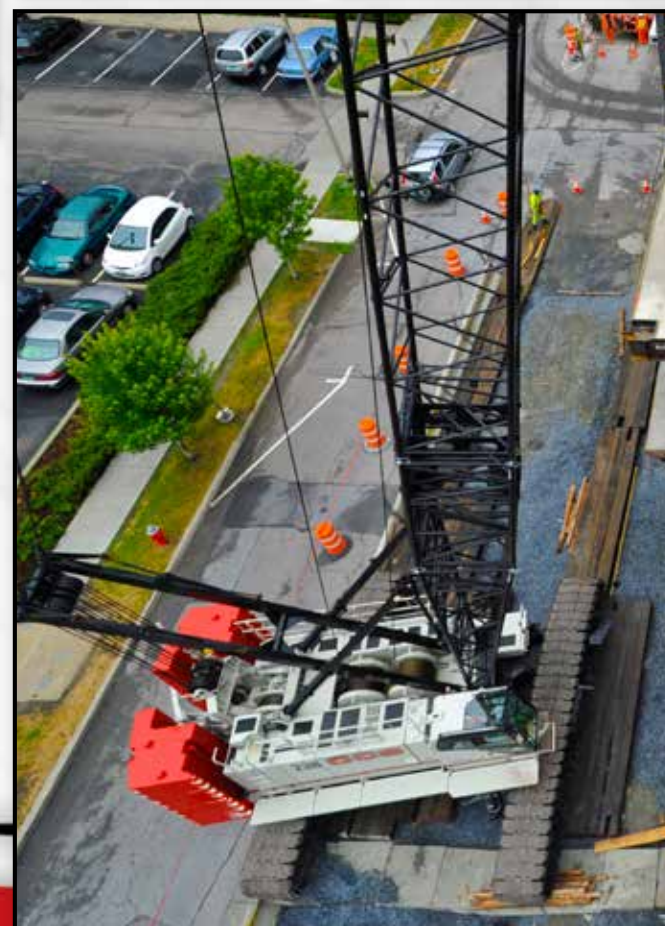


HSL capacity limiter with high visibility color graphic display

## Telematics. You own the data!

Cellular-based data logging and monitoring system that provides:

- Viewing options for sharing data with distributor and Link-Belt
- Location and operational settings
- Monitor routine maintenance intervals
- Crane and engine monitoring
- Diagnostic and fault codes



# 238 HSL attachments are versatile and strong

## Conventional open throat boom

- 260' (79.25 m) conventional boom - 70" x 62" (1.78 x 1.57 m) in-line pin-connected tube boom attachment and open throat top section
- Main chord members are made with 100,000 psi yield material with high strength lattice.
- Wire rope pendants stow with boom connecting pins on each extension for ease of transport.
- Boom suspension is achieved through 14-part boom hoist reeving.
- Standard equipment wear blocks protect lattice sections from wire rope scuffing.

## Auxiliary 5' (1.5 m) tip extension

- Optional — designed to provide clearance between two working hoist lines

## Fixed jib

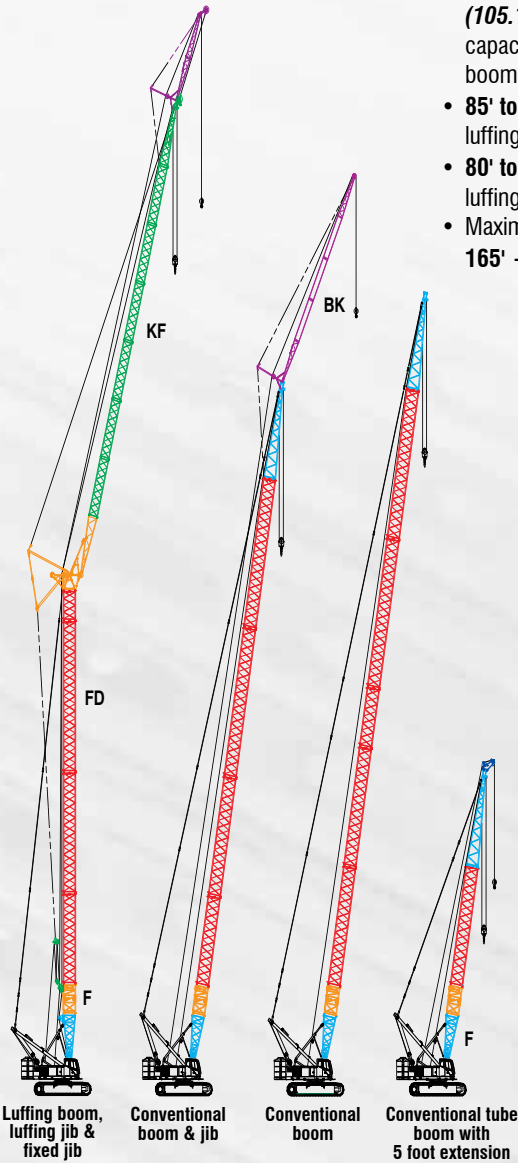
- 30' to 80' (9.14 - 24.38m)
- Offset angles at 5°, 15° and 25°

## Boom and jib — open throat

- 230' + 80' ft (70.10 + 24.38 m) tube boom + fixed jib
- 313' (95.40 m) maximum tip height

## Luffing attachment

- 27 ton (24.5 mt) capacity, 345' (105.16 m) luffing attachment with 360° capacities, utilizing conventional boom for luffing boom
- 85' to 165' (25.91 m to 50.29 m) luffing boom
- 80' to 160' (24.38 m to 48.77 m) luffing jib
- Maximum combination: 165' + 160' (50.29 m + 48.77 m)



The boom top section features polyamide sheaves and standard pin-on points for attachment of options such as a fixed jib, tip extension and adapters for universal pile driving leads with quick reeve ability.

In-line boom suspension load cell, standard with anti-two block system for both front and rear drum.

In-line boom suspension load cell



Double-tapered boom pin with pin catcher



## Outstanding machine access



• Full length fold up catwalks on both sides of the upper house

• Left and right side access points offer maximum accessibility





## Transports with base section & 10' insert — start lifting immediately!

- Transports with base section and **optional 10' (3.05 m) rigging insert**
- **15,000 lb (6 804 kg) biscuit-style counterweight** maximizes transportability
- **Simple counterweight removal system** lowers counterweights all the way to the ground
- **Carbody jacks are plumbed live** — no need to disconnect
- **Three-legged lift sling** handles counterweight and crawlers
- **238 HSL moves in 7 loads with full boom, jib and counterweight**
- Self-assembly and disassembly (**no helper crane required**)

### TRANSPORT WEIGHTS

<b>Main transport load:</b>	86,000 lbs (39 009 kg)
<b>“A” counterweight</b>	20,000 lbs (9 072 kg)
<b>Cheek weights</b>	6 @ 15,000 lbs (6 804 kg)
<b>Total counterweights</b>	110,000 lbs (49 895 kg)
<b>Sidelines</b>	2 @ 35,000 lbs (15 876 kg)





Link-Belt Construction Equipment Company is a leader in the design, manufacture and sales of telescopic and lattice boom cranes with headquarters and manufacturing facilities in Lexington, Kentucky, USA. Link-Belt is committed to the manufacture and service of high quality products that satisfy customers worldwide

Link-Belt is also home to a family of passionate professionals with a legacy of innovation and cutting-edge technology spanning over 140 years. These professionals, in a 770,822 sq. ft. (71,612 m<sup>2</sup>) manufacturing facility and with a culture of continuous innovation, have pushed Link-Belt to be the most modern crane manufacturer in North America.

**Your crane investment is always protected... with your Link-Belt distributor.**

When you invest in a Link-Belt crane, you invest in a legacy of outstanding customer support dating back to 1874.

The ultimate value of a machine begins with state-of-the-art design and quality manufacturing, but it is the excellent Link-Belt distributor product support that determines its long term value. This philosophy has earned Link-Belt cranes the enviable position of traditionally commanding some of the highest resale prices in the industry.

"... to be recognized as a **leader** in **customer service & satisfaction.**"  
— The Link-Belt Vision

**Link-Belt Preferred**

**As a member of Link-Belt Cranes user's group, you will have access to:**

- A comprehensive online library of parts, service & operator manuals for YOUR crane
- Interactive, live groundbearing calculations for YOUR crane
- Online access to recommended spare parts lists, filter, lube and key lists plus maintenance information and more
- No annual fee or charges to access your crane information
- Factory-trained distributor support
- Experienced factory technicians
- 24/7 parts distribution with 95% availability
- Factory parts customer service reps
- Link-Belt certified structural repair
- Boom inspection
- 3D lift planning
- Plus a vast array of information on new products, services and special offerings

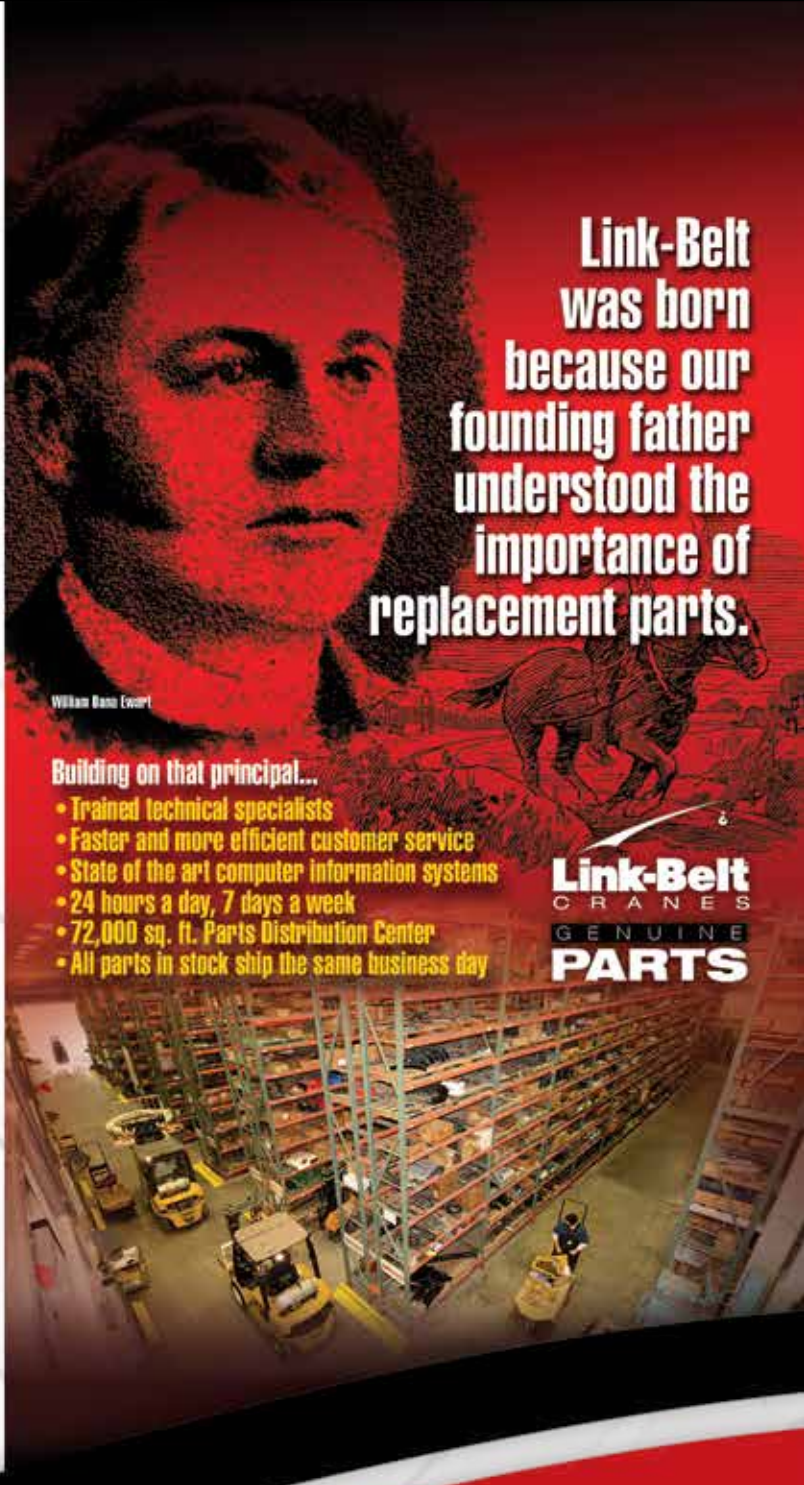
**Online 3D LIFT PLANNING**

- Web-based, active 3D, high graphic
- User-friendly, no CAD program required
- Always current, no updates required
- Print actual lift



**Online GROUND BEARING PRESSURES**

- Dynamic specific machine model position loadings
- Graphically illustrated in 360° numerical presentation
- Print out



**Link-Belt was born because our founding father understood the importance of replacement parts.**

**Building on that principal...**

- Trained technical specialists
- Faster and more efficient customer service
- State of the art computer information systems
- 24 hours a day, 7 days a week
- 72,000 sq. ft. Parts Distribution Center
- All parts in stock ship the same business day

**Link-Belt CRANES GENUINE PARTS**

**Link-Belt CRANES**  
Lexington, Kentucky | www.linkbelt.com

©Link-Belt is a registered trademark. Copyright 2018 All rights reserved. We reserve the right to change designs and specifications at any time. Litho in U.S.A. 6/18 3042 #4536 (supersedes #4534)