



View thousands of Crane Specifications on [FreeCraneSpecs.com](http://FreeCraneSpecs.com)

**SKYJACK**™



ZB20044 | 20,000 lb. Capacity, 44 ft. Lifting Height



ZOOM BOOM SERIES

**Telescopic** MATERIAL HANDLER



# ZOOM BOOM SERIES ZB20044

## DIMENSIONS

Wheelbase.....	11'6"	3.51 m
Overall Width.....	8'6"	2.59 m
Overall Height (stowed) .....	9'	2.74 m
Overall Length (less forks) .....	20'3"	6.17 m
Ground Clearance .....	18"	46 cm
Operating Weight .....	45,000 lb	20,412 kg
Turning Radius (outside).....	18'4"	5.59 m
Frame leveling (degrees).....	+/- 8	

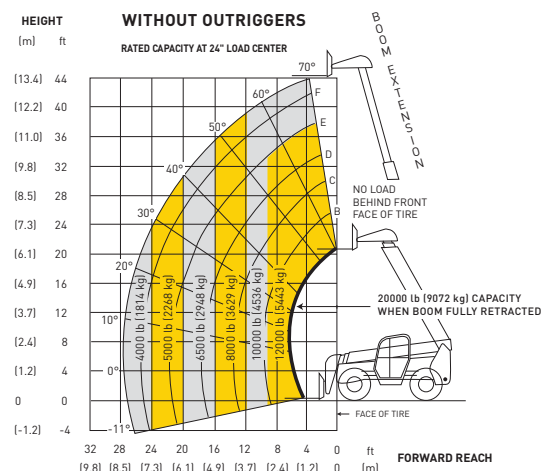
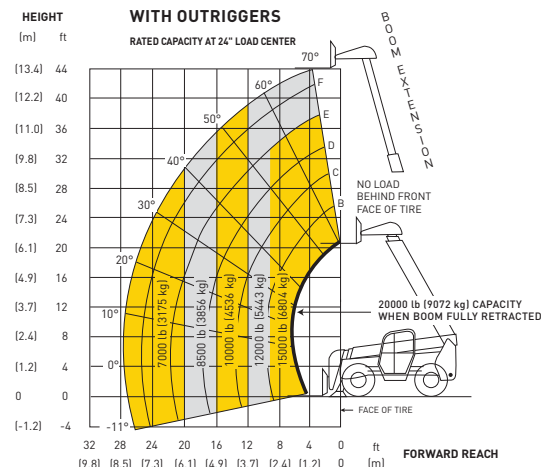
## SPECIFICATIONS

Engine .....	Cummins Tier 3 QSB 4.5C Turbocharged Diesel
HP @ rpm .....	160 horsepower @ 2500 rpm
Transmission.....	Dana powershift, 3 speeds forward and reverse
Top speed .....	20.5 mph (33 km/h)
Axles.....	Axletech steerable outboard planetary
Brakes.....	Service - 4 wheel dry disc Parking - pinion mounted dry disc on front axle
Tires .....	17.5 x 25 16PR grip lug
Steering.....	3 mode (2 wheel, 4 wheel, crab)
Boom.....	Maximum lift height - 44' 10" (13.67 m) Maximum forward reach - 27' 5" (8.36 m) Dual shaft type carriage Carriage rollback - 19 degrees Carriage forward tilt - 80 degrees
General.....	Fuel/hydraulic oil tank - 55 US gal. (208L) Hydraulic tank - 49 US gal. (185L) 12 volt - 105 amp. alternator

## STANDARD EQUIPMENT

- Outriggers
- Rear Axle "Stable-Lock" Cylinder with backup accumulator
- Standard quick attach carriage mount system
- Dual lift cylinders
- High pivot boom mount design
- ROPS/FOPS certified cab
- Rear window and side screen
- Lockable under cab storage compartment / step
- Rubber isolated bottom mount cab design
- Adjustable Suspension Seat with seat belt
- Dual joystick pilot operated controls for boom and frame level functions
- Tilt adjustable joystick console
- Gauge instrumentation
- Electronic Powerview engine monitor/gauge
- Lockable steel swing up engine doors
- Engine Grid Heater
- Dual element air cleaner with flow restriction indicator
- Dual batteries
- Independent Front/Rear Brake Systems
- Dual brake accumulators for Dead Engine Braking
- Brake Activated Transmission Disconnect
- 55 gallon steel hydraulic tank
- 49 gallon steel fuel tank
- Horn and backup alarm
- Mirrors, right and left side
- Remote grease fittings for axle trunnion mount lubrication
- Easy to remove steel component and access covers
- Operator/Maintenance and Parts manuals
- 12 months/2000 hour warranty (4 years on structure)

## CAPACITY CHART



## OPTIONAL EQUIPMENT

- Turn signals/lights
- Working lights
- Flashing beacon
- Auxiliary hydraulics
- Enclosed operator cab
- Foam filled tires
- Fenders
- Air conditioning
- Mine code specification

## ATTACHMENTS

- Various carriage/fork sizes
- Fork positioner
- Sideshift carriage
- Material bucket
- Coil ram
- Pipe and pole grapple
- Pipe and pole clamp
- Other specialized attachments
- 15,000 lb winch

**Note:** Materials and specifications are subject to change without notice.



55 Campbell Rd. Guelph, ON Canada N1H 1B9  
Sales Inquiries: 1-877-755-4387 (1-877-SJLIFTS)  
Main Switchboard: 1-800-265-2738  
Phone: 519-837-0888  
Fax: 519-837-8104  
Email: skyjack@skyjack.com

### IMPORTANT

- Machine design complies with ANSI/ITSDF B56.6-2005 stability requirements for rough terrain forklifts.
- Rated capacities shown are with machine on firm level ground, steered straight with frame level and on properly inflated tires
- Read boom angle and boom extension, then determine allowable load from chart.
- Do not exceed rated loads as dangerous and unstable machine conditions will result.
- Always travel with boom retracted in the lowest possible position.
- Never position fork carriage behind front face of tire.