



# WOGGRUBB

## CRANE RENTAL

CRANE RENTAL • HEAVY LIFTING & RIGGING  
PROJECT MANAGEMENT • ENGINEERED LIFT PLANNING



# HISTORY

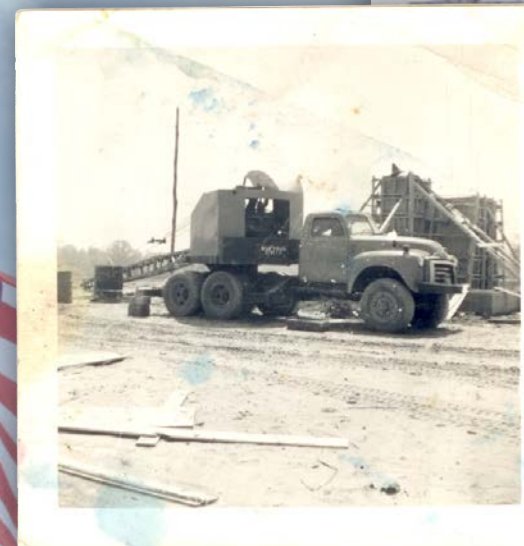
**FOR OVER 60 YEARS, W.O. GRUBB HAS BEEN A TRUSTED LEADER IN CRANE RENTAL SERVICES ACROSS THE MID-ATLANTIC AND BEYOND.**

As one of the largest family-owned crane rental companies in the nation, W.O. Grubb consistently ranks among the top 20 in the U.S., as recognized by **American Crane & Transport (A.C.T.)** magazine.

Our reputation is built on the ability to handle industrial and commercial projects of any size with exceptional efficiency. Backed by a highly organized team and seasoned professionals, we deliver superior craftsmanship and innovative solutions that exceed industry standards.

At W.O. Grubb, we don't just meet expectations — *we reach above and beyond.*

# REACHING ABOVE AND BEYOND SINCE 1962



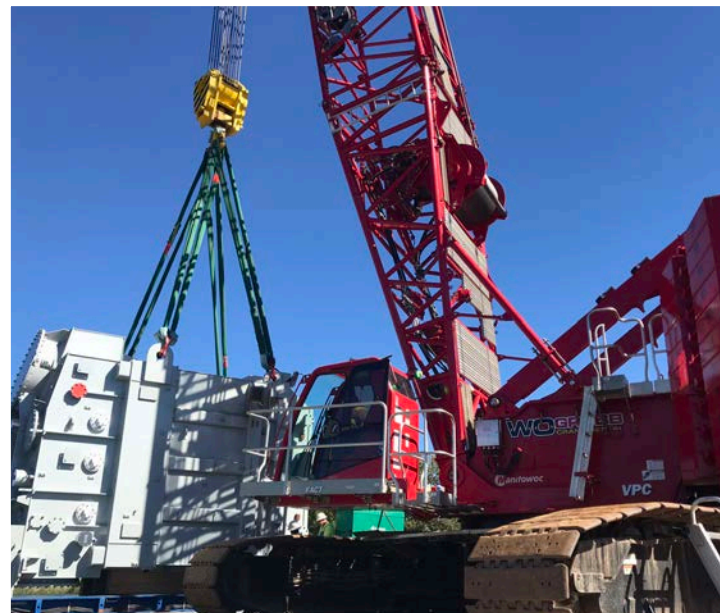
**W O GRUBB**  
CRANE RENTAL



OUR CRAWLER CRANE FLEET RANKS AMONG THE TOP 10 LARGEST IN THE NATION, WITH OVER 100 UNITS AT YOUR SERVICE.

Through ongoing investment and a commitment to maintaining one of the industry's most modern fleets, we stay highly competitive and provide versatile solutions to meet the demands of your project.

We offer flexible rental options — available on a “bare” or “operated” basis — customized to suit your specific needs.



CRAWLER CRANES

80 TON TO 825 TON

75 TON TO 140 TON

TELECRAWLER CRANES

W.O. GRUBB HAS BEEN AT THE FOREFRONT OF THE GROWING TELECRAWLER MARKET, AS ONE OF THE FIRST TO INVEST IN THIS CUTTING-EDGE EQUIPMENT.

Telescopic crawler cranes are ideal for foundation and bridgework, power transmission projects, wind power installations, and other utility applications. These versatile cranes are designed to work alongside, or as an alternative to, lattice boom crawler cranes and rough terrain cranes, providing exceptional flexibility on challenging job sites.







## ROUGH TERRAIN CRANES

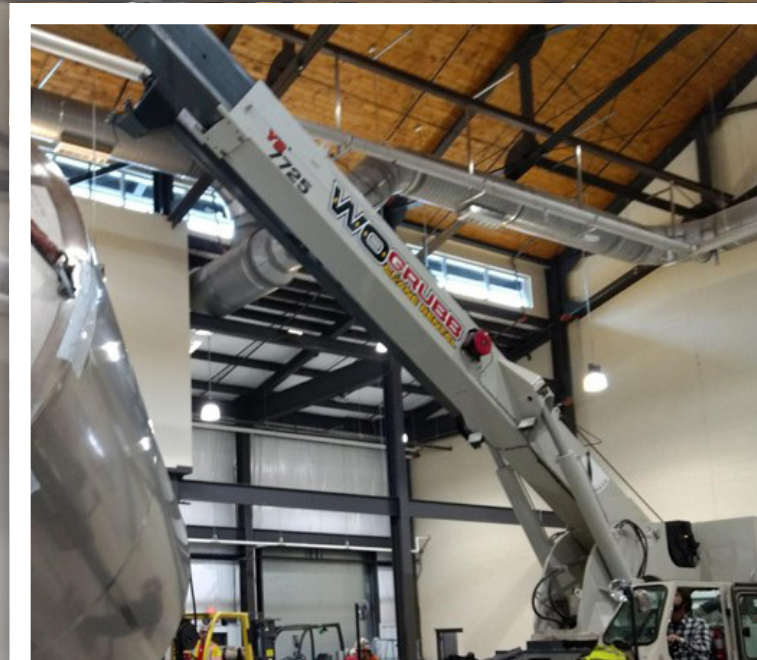
18 TON TO 165 TON

**OUR ROUGH TERRAIN CRANES ARE ENGINEERED FOR OFF-ROAD CONDITIONS AND DEMANDING APPLICATIONS.**

Ideal for pick-and-carry operations, large-scale construction projects, bridge building, and work within power plants, chemical facilities, and refineries. W.O. Grubb continues to invest in the latest Rough Terrain Cranes, offering a modern fleet with capacities ranging from 18 to 165 tons to meet the needs of any project.

6 TON TO 25 TON

## CARRY DECKS



**OUR CARRY DECK CRANES, ALSO KNOWN AS INDUSTRIAL CRANES, ARE HIGHLY VERSATILE AND PERFECT FOR LIFTING MATERIALS IN CONFINED AREAS.**

Their compact, low-profile design allows them to clear overhead obstacles and operate efficiently in tight spaces. W.O. Grubb offers Carry Decks with capacities ranging from 6 to 25 tons, making them ideal for a variety of industrial and maintenance applications.







**IN THE CRANE INDUSTRY, THE ALL-TERRAIN CRANE IS REGARDED AS THE LUXURY MODEL OF MOBILE HYDRAULIC CRANES.**

Combining the features of both a mobile truck crane and a rough terrain crane, it offers unmatched versatility. One of its key advantages is its ability to navigate challenging off-road conditions while also having the ability to travel at highway speeds.

W.O. Grubb's fleet of All-Terrain cranes is available on a fully operated and maintained rental basis, with capacities ranging from 70 to 770 tons.

**ALL-TERRAIN CRANES**

**75 TON TO 770 TON**

**60 TON TO 115 TON**

**HYDRAULIC TRUCK CRANES**



**OUR HYDRAULIC TRUCK CRANES ARE HIGHLY VERSATILE AND SERVE A WIDE RANGE OF INDUSTRIES, FROM SETTING AIR HANDLING UNITS TO SUPPORTING MAJOR MOTION PICTURE PRODUCTIONS.**

Available for both short-term and long-term rentals, our cranes are provided on a fully maintained and operated basis. We offer capacities ranging from 60 to 115 tons, ensuring we have the right solution for projects of any scale.





# ENGINEERING DEPARTMENT



**SERVICE EXCELLENCE: W.O. GRUBB EMPLOYS FACTORY-CERTIFIED SERVICE TECHNICIANS ACROSS OUR ENTIRE ORGANIZATION, WITH SOME RANKED AS HIGH AS #1 IN THE WORLD.**

Many of our technicians bring extensive experience from working directly with major manufacturers, including Link-Belt, Grove/Manitowoc, and Liebherr dealers. This deep industry knowledge ensures that our equipment is maintained to the highest standards, keeping your projects running safely and efficiently.

**A SAFE AND EFFICIENT PROJECT BEGINS WITH A SOLID PLAN.**

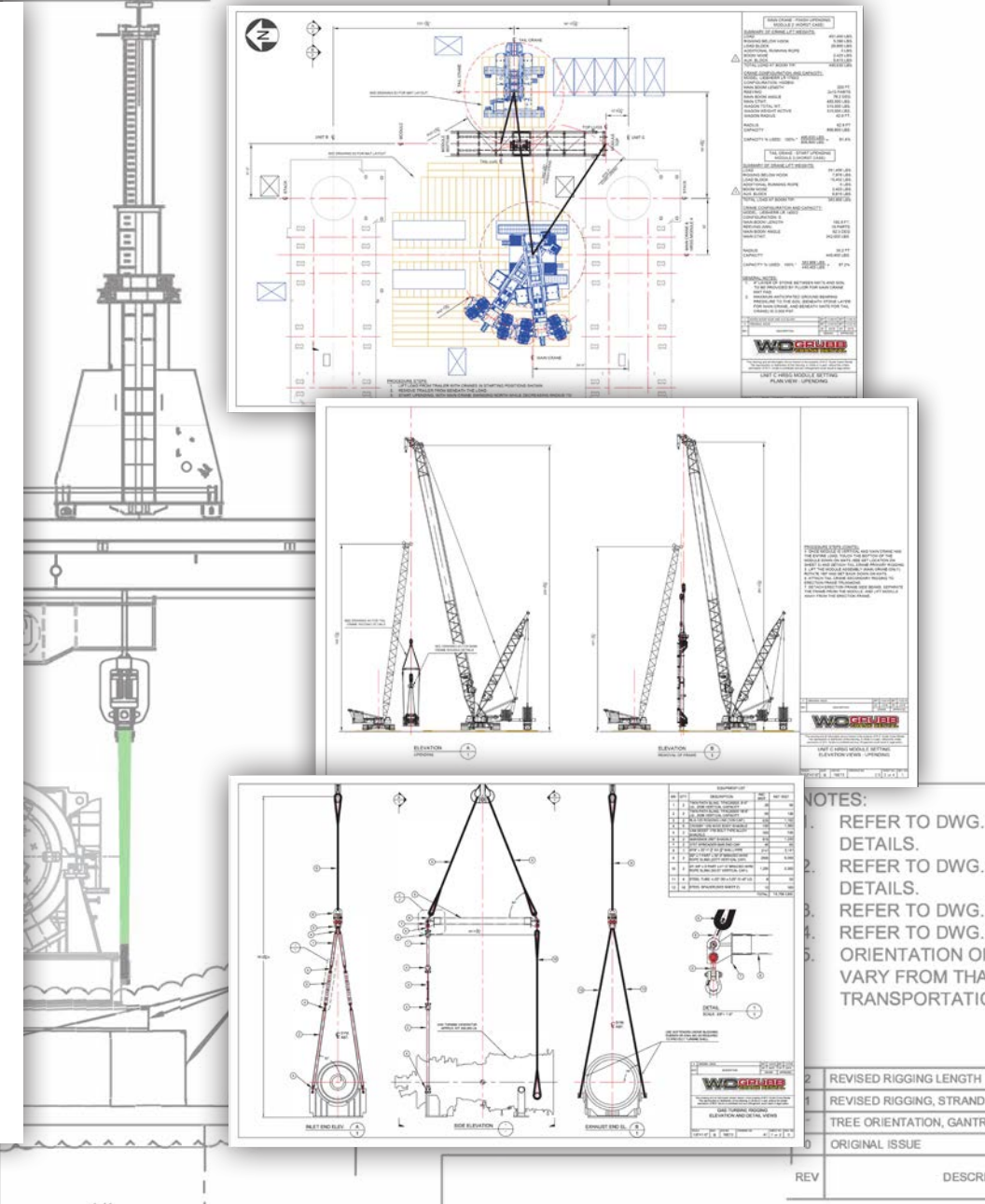
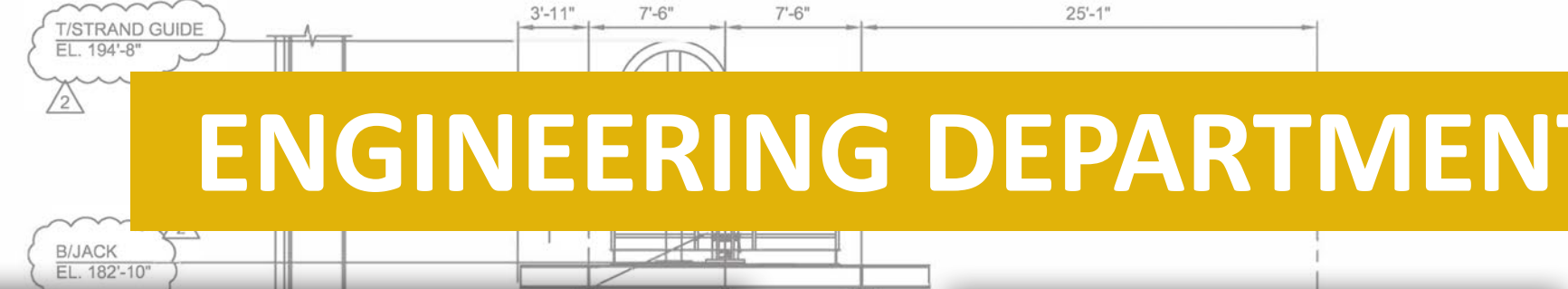
A detailed lift plan is a critical tool that clearly communicates the load handling process, ensuring all parties understand the job scope and execution strategy. Increasingly required by owners and contractors, comprehensive lift plans help mitigate risks and improve efficiency. With multiple licensed Professional Engineers on staff, W.O. Grubb delivers engineered lift plans that meet or exceed the most stringent industry standards. Whether your project involves a straightforward crane lift or requires critical lifts, multiple cranes, custom rigging, heavy transport, or alternative lifting equipment like hydraulic gantries, our engineering team has the expertise to provide safe, practical, and cost-effective solutions.

## Our Engineering Capabilities Include:

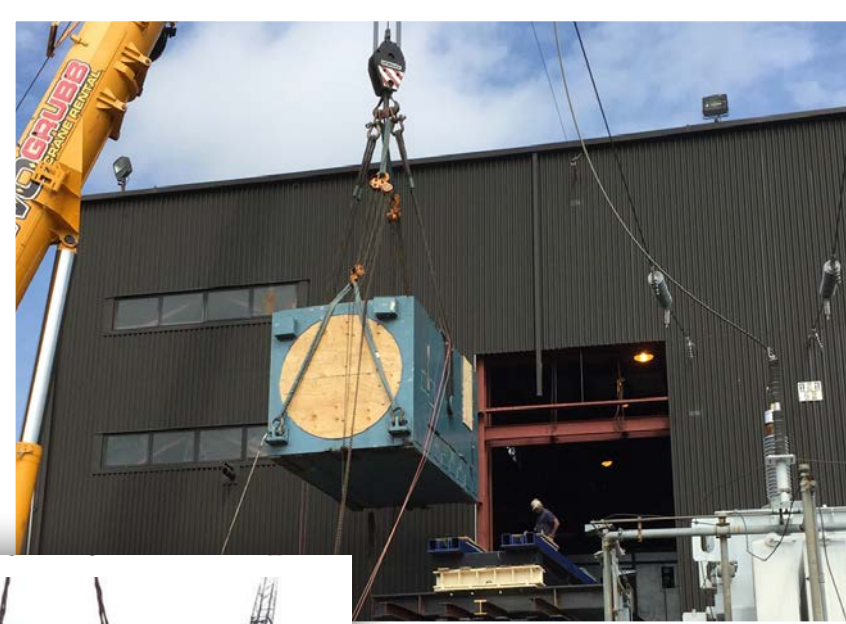
- PE stamps covering states throughout the Mid-Atlantic region
- Engineered, critical, and PE-stamped lift plans using advanced 2D and 3D CAD software
- Rigging arrangement design and detailed rigging configuration drawings, heavy haul transportation design and configuration
- Heavy lift engineering utilizing hydraulic gantries, jack and slide systems, and strand jacks
- Crane support/matting design and ground bearing pressure calculations
- Specialized and custom-designed heavy lift and rigging equipment
- Load test design and equipment certification

# SERVICE DEPARTMENT

# MAINTENANCE







# HEAVY LIFTING AND RIGGING

## W.O. GRUBB PROVIDES EXPERT HEAVY LIFTING AND RIGGING SERVICES FOR MANUFACTURING FACILITIES AND CONTRACTORS.

Our team is equipped to handle everything from small, delicate machines to large, heavy-tonnage equipment. Our experienced riggers are skilled at working within a variety of manufacturing plant environments, ensuring your machinery is moved safely, efficiently, and with minimal disruption. Whether you need to relocate a single machine or an entire plant, we have the resources and expertise to get the job done right.

We own and operate a full range of specialized rigging equipment, including forklifts, carry decks, lift systems, jacking systems, and neoprene rollers, allowing us to meet your handling needs with precision and care. As the operator of the largest crane fleet in the region, W.O. Grubb brings unmatched capability and reliability to every project.

Our knowledgeable field representatives are available to assist with technical details and handling options throughout every phase of your project. Contact us today for a free estimate or to learn more about how we can support your heavy lifting and rigging needs. We look forward to partnering with you.

### SERVICES INCLUDE:

- Turnkey Plant Relocations
- Machinery Moving & Installation (boilers, extruders, MRI machines)
- Clean Room Installations
- Heavy Lifting & Specialized Hauling
- Warehousing & Machinery Storage
- Engineering and Rigging Plans Available

### RIGGING EQUIPMENT:

- Hydraulic Gantry Systems
- Industrial Cranes
- Stator Frames
- Lock-n-Slides
- Jack/Dolly Systems
- Forklifts
- Air Dollies
- Hydraulic Platform Trailers (either self-propelled or primemover assisted)







# LOCATIONS

## **RICHMOND, VA**

Tel: (804) 271-9471  
5120 Route 1  
North Chesterfield,  
VA 23234

## **CRAWLER DIVISION**

Tel: (804) 233-3613  
2910 Cofer Road  
Richmond, VA 23224

## **HEAVY LIFT & RIGGING DIVISION**

Tel: (804) 275-0563  
3001 Space Road  
Richmond, VA 23234

## **ALEXANDRIA, VA**

Tel: (703) 370-7500  
5800 Farrington Avenue  
Alexandria, VA 22304

## **BALTIMORE, MD**

Tel: (410) 796-3661  
6331 South Hanover Road  
Elkridge, MD 21075

## **FREDERICKSBURG, VA**

Tel: (540) 891-7279  
9630 Northeast Drive  
Fredericksburg, VA 22408

## **GREENSBORO, NC**

Tel: (336) 438-9988  
315 S Swing Road  
Greensboro, NC 27409

## **PORTSMOUTH, VA**

Tel: (757) 465-4072  
2201 Elmhurst Lane  
Portsmouth, VA 23701

## **NEWPORT NEWS, VA**

Tel: (757) 525-8087  
501-A Trustwood Lane  
Newport News, VA 23608

## **ROANOKE, VA**

Tel: (540) 966-4078  
39 Gibson Lane  
Cloverdale, VA 24077

## **WINCHESTER, VA**

Tel: (540) 665-5180  
220 Tyson Drive  
Winchester, VA 22603

## **WILMINGTON, NC**

Tel: (910) 228-5310  
5531 Barbados Blvd.  
Castle Hayne, NC 28429

## **GAINESVILLE, VA**

Tel: (804) 233-3613  
7655 Limestone Drive  
Gainesville, VA 20155

## **CORPORATE OFFICE:**

5120 Route 1  
North Chesterfield,  
VA 23234

1-866-WOGRUBB (964-7822)

WOGrubb.com

## **CONNECT WITH US:**

 /wo-grubb-crane-rental

 @WOGrubbCraneRental

 @wogrubb\_cranerental

**WOGRUBB**  
CRANE RENTAL