



AMERICAN HC 110

Hydraulic Crawler Crane 59 HI Boom

LIFT RATINGS IN POUNDS

With 59HI Offset Tip Boom and 52,900 Pound Counterweight

Boom Length	Radius (Feet)	Boom Angle (Degrees)	Side Frames Extended (Pounds)	From Boom Pt. to Ground (Feet)
50' (15.2M)	13	79.9	220,000*	56
	15	77.6	190,080	55
	20	71.6	123,590	54
	25	65.4	87,980	52
	30	58.9	67,950	49
	35	51.9	55,210	46
	40	44.1	46,320	41
60' (18.3M)	50	22.7	34,800	26
	14	80.7	203,570*	66
	15	79.7	189,950*	65
	20	74.8	123,410	64
	25	69.7	87,800	63
	30	64.5	67,740	61
	35	59.1	55,020	58
70' (21.3M)	40	53.3	46,110	54
	50	40.0	34,570	45
	60	20.6	27,460	27
	16	80.3	177,910*	75
	20	77.0	123,260	75
	25	72.8	87,640	73
	30	68.4	67,570	71
80' (24.4M)	35	63.9	54,860	69
	40	59.2	45,940	67
	50	49.0	34,380	59
	60	36.9	27,290	48
	70	19.0	22,410	29
	17	80.8	162,150	85
	20	78.7	123,050	85
90' (27.4M)	25	75.0	87,450	84
	30	71.2	67,340	82
	35	67.4	54,640	80
	40	63.4	45,710	78
	50	55.0	34,140	72
	60	45.7	27,070	64
	70	34.4	22,170	52
100' (30.5M)	80	17.7	18,640	31
	19	80.6	133,760	95
	20	79.9	122,900	95
	25	76.7	87,300	94
	30	73.4	67,190	93
	35	70.0	54,480	91
	40	66.6	45,540	89
100' (30.5M)	50	59.4	33,960	84
	60	51.6	26,900	77
	70	42.9	22,010	68
	80	32.3	18,460	55
	90	16.7	15,780	32
	20	80.9	122,700	105
	25	78.0	87,090	104
100' (30.5M)	30	75.1	66,960	103
	35	72.1	54,260	102
	40	69.0	45,310	100
	50	62.7	33,720	95
	60	56.0	26,670	89
	70	48.8	21,770	82

Boom Length	Radius (Feet)	Boom Angle (Degrees)	Side Frames Extended (Pounds)	From Boom Pt. to Ground (Feet)
100' (con't)	80	40.6	18,220	71
	90	30.6	15,530	57
	100	15.8	13,440	34
110' (33.5M)	22	80.7	105,370	115
	25	79.1	86,910	114
	30	76.5	66,750	113
	35	73.8	54,060	112
	40	71.0	45,100	110
	50	65.4	33,500	106
	60	59.5	26,470	101
	70	53.2	21,560	94
	80	46.4	18,000	86
	90	38.6	15,300	75
	100	29.1	13,200	60
120' (36.6M)	110	15.1	11,530	35
	24	80.5	91,970	125
	25	80.1	86,700	125
	30	77.6	66,510	124
	35	75.2	53,830	122
	40	72.7	44,860	121
	50	67.6	33,250	117
	60	62.3	26,230	113
	70	56.7	21,320	107
	80	50.8	17,750	99
	90	44.3	15,060	90
130' (39.6M)	100	36.9	12,950	78
	110	27.9	11,260	62
	120	14.4	9,880	36
	25	80.8	86,510	135
	30	78.6	66,320	134
	35	76.3	53,640	133
	40	74.0	44,680	131
140' (42.7M)	50	69.4	33,040	128
	60	64.6	26,030	124
	70	59.6	21,110	118
	80	54.3	17,560	112
	90	48.6	14,850	104
	100	42.4	12,740	94
	110	35.4	11,040	82
	120	26.7	9,660	65
	130	13.8	8,510	37
	27	80.7	76,990	145
	140' (42.7M)	30	79.4	66,090
35		77.3	53,410	143
40		75.2	44,440	142
50		70.9	32,790	139
60		66.5	25,800	135
70		62.0	20,870	130
80		57.2	17,300	124
90		52.2	14,610	117
100		46.8	12,490	108
110		40.8	10,790	98
140' (42.7M)		120	34.0	9,400
	130	25.7	8,240	67
	140	13.3	7,270	39

Boom Length	Radius (Feet)	Boom Angle (Degrees)	Side Frames Extended (Pounds)	From Boom Pt. to Ground (Feet)
150' (45.7M)	28	80.9	72,790	154
	30	80.1	65,870	154
	35	78.2	53,210	153
	40	76.2	44,220	152
	50	72.2	32,560	149
	60	68.2	25,580	146
	70	64.0	20,650	141
	80	59.6	17,080	136
	90	55.1	14,370	129
	100	50.3	12,260	122
	110	45.1	10,560	113
	120	39.4	9,160	102
	130	32.8	7,990	88
	140	24.9	7,020	69
	150	12.8	6,190	40
160' (48.8M)	30	80.7	65,640	164
	35	78.9	52,980	163
	40	77.1	43,980	162
	50	73.4	32,310	160
	60	69.6	25,340	156
	70	65.7	20,410	152
	80	61.7	16,830	147
	90	57.6	14,120	141
	100	53.2	12,000	134
	110	48.6	10,300	126
	120	43.6	8,900	117
	130	38.1	7,730	105
	140	31.8	6,750	91
	150	24.0	5,910	72
	160	12.4	5,200	41
170' (51.8M)	31	80.9	62,400	174
	35	79.6	52,770	174
	40	77.9	43,770	173
	50	74.4	32,090	170
	60	70.8	25,130	167
	70	67.2	20,200	163
	80	63.5	16,620	159
	90	59.7	13,910	153
	100	55.7	11,780	147
	110	51.5	10,080	139
	120	47.0	8,670	131
	130	42.2	7,500	121
	140	36.9	6,510	108
	150	30.8	5,670	93
	160	23.3	4,950	74
170	12.1	4,340	42	
180' (54.9M)	33	80.8	57,130	184
	35	80.2	52,540	184
	40	78.6	43,540	183
	50	75.3	31,840	180
	60	71.9	24,900	178
	70	68.6	19,950	174
	80	65.1	16,370	170
	90	61.5	13,660	165
	100	57.8	11,530	159

LIFT RATINGS IN POUNDS (continued)

With 59HI Offset Tip Boom and 52,900 Pound Counterweight

Boom Length	Radius (Feet)	Boom Angle (Degrees)	Side Frames Extended (Pounds)	From Boom Pt. to Ground (Feet)	Boom Length	Radius (Feet)	Boom Angle (Degrees)	Side Frames Extended (Pounds)	From Boom Pt. to Ground (Feet)	Boom Length	Radius (Feet)	Boom Angle (Degrees)	Side Frames Extended (Pounds)	From Boom Pt. to Ground (Feet)
180' (con't)	110	54.0	9,820	152	200' (con't)	80	67.7	15,890	191	220' (67.1M)	39	80.9	36,510*	224
	120	49.9	8,420	144		90	64.6	13,170	187		40	80.7	36,220*	223
	130	45.6	7,240	135		100	61.4	11,040	182		50	78.0	30,880	222
	140	41.0	6,250	124		110	58.0	9,330	176		60	75.3	23,990	219
	150	35.8	5,410	112		120	54.6	7,920	169		70	72.6	19,020	216
	160	29.9	4,680	96		130	51.0	6,740	162		80	69.8	15,430	213
	170	22.6	4,040	76		140	47.2	5,750	153		90	67.1	12,700	209
	180	11.7	3,510	43		150	43.1	4,900	143		100	64.2	10,570	204
190' (57.9M)	34	81.0	52,570*	194	210' (64.0M)	38	80.8	41,580*	214	230' (70.1M)	41	80.8	31,890*	233
	35	80.7	52,320	194		40	80.2	40,870*	213		50	78.5	28,280*	232
	40	79.2	43,310	193		50	77.4	31,130	211		60	76.0	23,760	230
	50	76.1	31,610	191		60	74.6	24,220	209		70	73.4	18,790	227
	60	72.9	24,680	188		70	71.7	19,260	206		80	70.8	15,190	224
	70	69.7	19,720	185		80	68.8	15,670	202		90	68.1	12,470	220
	80	66.5	16,140	181		90	65.9	12,950	198		100	65.4	10,320	215
	90	63.2	13,420	176		100	62.9	10,820	193		110	62.6	8,600	211
	100	59.7	11,300	170	110	59.7	9,100	188	120	59.8	7,190	205		
	110	56.2	9,580	164	120	56.5	7,690	182	130	56.8	6,010	199		
	120	52.4	8,170	157	130	53.2	6,510	174	140	53.8	5,010	192		
	130	48.5	7,000	149	140	49.7	5,520	166	150	50.6	4,150	184		
140	44.3	6,010	139	150	46.0	4,660	157	160	47.3	3,410	175			
150	39.8	5,160	128	160	42.0	3,920	147	170	43.8	2,760	166			
160	34.8	4,420	115	170	37.8	3,270	135	180	40.1	2,190	154			
170	29.1	3,790	99	180	33.0	2,710	121	190	36.0	1,690	142			
180	22.0	3,230	78	190	27.6	2,220	104							
190	11.4	2,760	44	200	20.9	1,780	81							
200' (61.0M)	36	80.9	46,920*	204										
	40	79.7	43,070	203										
	50	76.8	31,360	201										
	60	73.8	24,440	198										
	70	70.8	19,480	195										

LIFT RATINGS IN POUNDS

With 59HI Offset Tip Boom, #9HL Jib and 52,900 Pound Counterweight

Boom and Jib Length	Jib Radius (Feet)	5.0 Deg Offset		15.0 Deg Offset		25.0 Deg Offset		Boom and Jib Length	Jib Radius (Feet)	5.0 Deg Offset		15.0 Deg Offset		25.0 Deg Offset	
		Boom Angle	Ratings (Pounds)	Boom Angle	Ratings (Pounds)	Boom Angle	Ratings (Pounds)			Boom Angle	Ratings (Pounds)	Boom Angle	Ratings (Pounds)	Boom Angle	Ratings (Pounds)
40' (12.2M) JIB & 100' (30.5M) BOOM	30	80.7	22,540*					40' (con't)	90	59.0	15,350	61.3	15,350	63.2	15,350
	35	78.6	22,540*						100	54.7	13,230	56.9	13,230	58.8	13,230
	40	76.6	22,510*	79.3	21,260*				110	50.2	11,530	52.3	11,530	54.2	11,530
	50	72.3	21,720*	75.0	20,730*	77.5	19,820*		120	45.3	10,120	47.4	10,120	49.1	10,130
	60	68.0	21,090*	70.7	20,190*	73.1	19,490*		40' (12.2M) JIB & 130' (39.6M) BOOM	34	81.0	22,500*			
70	63.5	20,520*	66.1	19,780*	68.5	18,380*	35	80.6		22,500*					
80	58.9	18,580	61.4	18,580	63.7	17,020*	40	78.9		22,500*					
90	53.9	15,880	56.5	15,880	58.7	15,860*	50	75.5		22,240*	77.7	21,010*	79.8	20,020*	
100	48.7	13,760	51.1	13,760	53.2	13,770	60	72.0		21,690*	74.2	20,530*	76.3	19,670*	
40' (12.2M) JIB & 110' (33.5M) BOOM	31	80.9	22,530*					70	68.5	21,100*	70.6	20,130*	72.6	19,390*	
	35	79.4	22,530*					80	64.8	17,820	66.9	17,820	68.9	17,830	
	40	77.5	22,530*	80.0	21,400*			90	61.0	15,120	63.1	15,120	65.0	15,120	
	50	73.5	21,920*	76.0	20,830*	78.4	19,920*	100	57.1	13,000	59.2	13,000	61.0	13,000	
	60	69.5	21,280*	72.0	20,370*	74.3	19,500*	110	52.9	11,290	55.0	11,290	56.8	11,290	
	70	65.4	20,780*	67.9	19,910*	70.1	18,850*	120	48.6	9,890	50.6	9,890	52.3	9,900	
40' (12.2M) JIB & 140' (42.7M) BOOM	80	61.1	18,320	63.6	18,330	65.7	17,510*	130	43.9	8,710	45.8	8,720	47.4	8,720	
	90	56.7	15,620	59.1	15,620	61.2	15,630	40' (12.2M) JIB & 120' (36.6M) BOOM	36	80.8	22,490*				
	100	52.0	13,500	54.3	13,500	56.3	13,510		40	79.6	22,490*				
	110	46.9	11,800	49.2	11,800	51.1	11,800		50	76.3	22,380*	78.4	21,090*	80.4	20,080*
	33	80.8	22,520*						60	73.0	21,830*	75.1	20,690*	77.1	19,760*
	35	80.1	22,520*						70	69.7	21,140	71.8	20,300*	73.7	19,410*
40	78.2	22,520*	80.6	21,460*			80		66.3	17,560	68.3	17,560	70.2	17,560	
50	74.6	22,080*	76.9	20,940*	79.2	19,960*	90	62.8	14,850	64.8	14,850	66.6	14,860		
60	70.9	21,520*	73.2	20,440*	75.4	19,580*	100	59.1	12,730	61.1	12,730	62.9	12,740		
70	67.0	20,980*	69.3	20,010*	71.5	19,290*	110	55.3	11,020	57.3	11,020	59.0	11,030		
80	63.1	18,060	65.4	18,060	67.4	17,960*	120	51.3	9,610	53.3	9,610	54.9	9,620		

LIFT RATINGS IN POUNDS (continued)

With 59HI Offset Tip Boom, #9HL Jib and 52,900 Pound Counterweight

Boom and Jib Length	Jib Radius (Feet)	5.0 Deg Offset		15.0 Deg Offset		25.0 Deg Offset		
		Boom Angle	Ratings (Pounds)	Boom Angle	Ratings (Pounds)	Boom Angle	Ratings (Pounds)	
40' (12.2M) JIB & 150' (45.7M) BOOM	130	47.1	8,440	49.0	8,450	50.5	8,450	
	140	42.6	7,450	44.4	7,450	45.8	7,460	
	38	80.7	22,470*					
	40	80.1	22,470*					
	50	77.1	22,470*	79.1	21,190*	80.9	20,100*	
	60	74.0	21,980*	75.9	20,770*	77.8	19,810*	
	70	70.8	20,890	72.8	20,390*	74.6	19,510*	
	80	67.6	17,310	69.5	17,310	71.3	17,310	
	90	64.3	14,600	66.2	14,600	67.9	14,600	
	100	60.9	12,470	62.8	12,480	64.5	12,480	
	110	57.4	10,760	59.3	10,760	60.9	10,770	
	120	53.7	9,360	55.6	9,370	57.1	9,370	
	130	49.9	8,180	51.7	8,190	53.2	8,190	
	140	45.8	7,200	47.5	7,200	49.0	7,200	
	150	41.4	6,340	43.1	6,350	44.4	6,350	
40' (12.2M) JIB & 160' (48.8M) BOOM	39	80.9	22,460*					
	40	80.6	22,460*					
	50	77.7	22,460*	79.6	21,280*			
	60	74.8	22,110*	76.7	20,840*	78.4	19,830*	
	70	71.8	20,630	73.7	20,470*	75.4	19,530*	
	80	68.8	17,040	70.6	17,050	72.3	17,050	
	90	65.7	14,330	67.5	14,330	69.2	14,340	
	100	62.5	12,210	64.3	12,210	65.9	12,210	
	110	59.2	10,500	61.0	10,500	62.6	10,500	
	120	55.8	9,100	57.6	9,100	59.1	9,100	
	130	52.3	7,920	54.0	7,920	55.5	7,920	
	140	48.5	6,920	50.2	6,920	51.6	6,920	
	150	44.5	6,070	46.2	6,070	47.5	6,080	
	160	40.3	5,330	41.9	5,330	43.1	5,340	
	40' (12.2M) JIB & 170' (51.8M) BOOM	41	80.8	22,450*				
50		78.3	22,450*	80.1	21,300*			
60		75.5	22,180*	77.3	20,930*	79.0	19,860*	
70		72.7	20,390	74.5	20,400	76.1	19,650*	
80		69.8	16,820	71.6	16,820	73.2	16,820	
90		66.9	14,100	68.6	14,100	70.2	14,100	
100		63.9	11,970	65.6	11,970	67.2	11,980	
110		60.8	10,260	62.5	10,260	64.0	10,260	
120		57.6	8,860	59.3	8,860	60.8	8,860	
130		54.3	7,680	56.0	7,680	57.4	7,680	
140		50.9	6,680	52.5	6,680	53.9	6,690	
150		47.3	5,830	48.9	5,830	50.2	5,840	
160		43.4	5,090	45.0	5,090	46.2	5,090	
170		39.2	4,440	40.8	4,450	41.9	4,450	
40' (12.2M) JIB & 180' (54.9M) BOOM		42	80.9	22,430*				
	50	78.8	22,430*	80.6	21,320*			
	60	76.2	22,320*	77.9	21,000*	79.5	19,970*	
	70	73.5	20,140	75.2	20,140	76.8	19,660*	
	80	70.8	16,550	72.5	16,560	74.0	16,560	
	90	68.0	13,840	69.7	13,840	71.2	13,840	
	100	65.2	11,710	66.8	11,710	68.3	11,710	
	110	62.3	9,990	63.9	10,000	65.4	10,000	
	120	59.3	8,590	60.9	8,590	62.3	8,600	
	130	56.2	7,410	57.8	7,410	59.2	7,420	
	140	53.0	6,410	54.6	6,410	55.9	6,420	
	150	49.6	5,560	51.2	5,570	52.5	5,570	
	160	46.1	4,820	47.6	4,820	48.9	4,820	
	170	42.3	4,170	43.8	4,170	45.0	4,180	
	180	38.3	3,600	39.7	3,600	40.8	3,610	
40' (12.2M) JIB & 190' (57.9M) BOOM	44	80.8	22,280*					
	50	79.3	21,610*	81.0	20,000*			
	60	76.8	20,450*	78.4	19,210*	80.0	17,960*	
	70	74.2	19,360*	75.9	18,380*	77.4	17,390*	
	80	71.6	16,310	73.3	16,310	74.7	16,310	
	90	69.0	13,590	70.6	13,600	72.1	13,600	
	100	66.3	11,460	67.9	11,460	69.3	11,470	
	110	63.6	9,750	65.1	9,750	66.5	9,750	
	120	60.7	8,340	62.3	8,340	63.7	8,340	
	130	57.8	7,150	59.4	7,160	60.7	7,160	
	140	54.8	6,160	56.4	6,170	57.7	6,170	
	150	51.7	5,300	53.2	5,310	54.5	5,310	
	160	48.5	4,560	50.0	4,560	51.2	4,560	
	170	45.0	3,910	46.5	3,910	47.6	3,920	
	180	41.4	3,350	42.8	3,350	43.9	3,350	
190	37.4	2,830	38.8	2,840	39.7	2,840		
40' (12.2M) JIB & 200' (61.0M) BOOM	45	81.0	19,380*					
	50	79.8	18,840*					
	60	77.3	17,740*	78.9	16,740*	80.4	15,650*	
	70	74.9	16,670*	76.5	15,890*	77.9	15,050*	
	80	72.4	15,640*	74.0	15,050*	75.4	14,440*	
	90	69.9	13,330	71.5	13,330	72.9	13,330	
	100	67.4	11,190	68.9	11,200	70.3	11,200	
	110	64.7	9,480	66.3	9,480	67.6	9,490	
	120	62.1	8,070	63.6	8,070	64.9	8,070	
	130	59.3	6,900	60.8	6,900	62.1	6,900	
	140	56.5	5,900	58.0	5,900	59.3	5,900	
	150	53.6	5,040	55.1	5,040	56.3	5,040	
	160	50.6	4,290	52.0	4,290	53.2	4,290	
	170	47.4	3,640	48.8	3,640	49.9	3,650	
	180	44.0	3,070	45.4	3,080	46.5	3,080	
	190	40.4	2,560	41.8	2,560	42.8	2,570	
	200	36.6	2,110	37.9	2,110	38.8	2,120	
	40' (12.2M) JIB & 210' (64.0M) BOOM	47	80.9	16,660*				
		50	80.2	16,360*				
		60	77.9	15,300*	79.4	14,480*	80.8	13,600*
70		75.5	14,320*	77.0	13,710*	78.4	13,020*	
80		73.1	13,360*	74.6	12,910*	76.0	12,390*	
90		70.7	12,440*	72.2	12,080*	73.6	11,700*	
100		68.3	10,960	69.8	10,960	71.1	10,960	
110		65.8	9,250	67.3	9,250	68.6	9,250	
120		63.3	7,830	64.7	7,830	66.0	7,840	
130		60.7	6,650	62.1	6,650	63.4	6,660	
140		58.0	5,650	59.4	5,650	60.7	5,650	
150		55.3	4,790	56.7	4,790	57.9	4,790	
160		52.4	4,050	53.8	4,050	55.0	4,060	
170		49.5	3,400	50.8	3,400	51.9	3,410	
180		46.4	2,820	47.7	2,830	48.8	2,830	
190	43.1	2,320	44.4	2,320	45.4	2,330		
210	39.6	1,870	40.9	1,870	41.8	1,870		
210	35.8	1,460	37.0	1,470	37.9	1,470		
50' (15.2M) JIB & 130' (39.6M) BOOM	37	80.8	20,630*					
	40	79.8	20,390*					
	50	76.6	19,680*					
	60	73.3	19,030*	75.9	17,540*	78.4	16,230*	
	70	70.0	18,400*	72.6	17,050*	75.0	15,960*	
	80	66.5	17,800*	69.1	16,630*	71.5	15,630*	
	90	63.0	15,210	65.6	15,210	67.9	14,590*	
	100	59.4	13,090	61.9	13,090	64.1	13,100	
	110	55.6	11,380	58.1	11,380	60.2	11,390	
	120	51.6	9,980	54.0	9,980	56.1	9,990	
	130	47.4	8,800	49.8	8,810	51.8	8,810	
	50' (15.2M) JIB & 140' (42.7M) BOOM	38	81.0	20,560*				
		40	80.4	20,420*				
		50	77.3	19,820*	79.8	17,980*		
		60	74.2	19,120*	76.7	17,600*	79.0	16,260*
70		71.1	18,500*	73.5	17,100*	75.8	15,970*	
80		67.9	17,660	70.3	16,710*	72.5	15,700*	
90		64.6	14,950	67.0	14,950	69.2	14,950*	
100		61.2	12,820	63.6	12,830	65.7	12,830	
110		57.6	11,110	60.0	11,120	62.1	11,120	
120		54.0	9,710	56.3	9,720	58.3	9,720	
130		50.1	8,530	52.4	8,540	54.4	8,540	
140		46.0	7,540	48.3	7,540	50.1	7,550	
50' (15.2M) JIB & 150' (45.7M) BOOM		40	80.9	20,460*				
		50	78.0	19,880*	80.3	17,970*		
		60	75.0	19,230*	77.4	17,590*	79.6	16,260*
	70	72.0	18,670*	74.4	17,220*	76.6	15,980*	
	80	69.0	17,410	71.3	16,780*	73.5	15,720*	
	90	65.9	14,700	68.2	14,700	70.3	14,710	
	100	62.7	12,570	65.0	12,570	67.1	12,570	
	110	59.4	10,860	61.7	10,860	63.7	10,860	
	120	56.0	9,460	58.3	9,460	60.2	9,460	
	130	52.5	8,280	54.7	8,280	56.6	8,280	
	140	48.8	7,290	50.9	7,290	52.7	7,300	
	150	44.8	6,430	46.9	6,430	48.6	6,440	

LIFT RATINGS IN POUNDS (continued)

With 59HI Offset Tip Boom, #9HL Jib and 52,900 Pound Counterweight

Boom and Jib Length	Jib Radius (Feet)	5.0 Deg Offset		15.0 Deg Offset		25.0 Deg Offset	
		Boom Angle	Ratings (Pounds)	Boom Angle	Ratings (Pounds)	Boom Angle	Ratings (Pounds)
50' (15.2M) JIB & 160' (48.8M) BOOM	42	80.7	20,310*				
	50	78.5	19,870*	80.8	17,940*		
	60	75.7	19,320*	78.0	17,630*	80.1	16,180*
	70	72.9	18,770*	75.2	17,260*	77.2	15,980*
	80	70.1	17,150	72.3	16,830*	74.3	15,720*
	90	67.1	14,440	69.3	14,440	71.3	14,440
	100	64.1	12,300	66.3	12,300	68.3	12,310
	110	61.0	10,590	63.2	10,590	65.1	10,600
	120	57.9	9,190	60.0	9,190	61.9	9,190
	130	54.6	8,010	56.7	8,010	58.5	8,010
	140	51.1	7,010	53.2	7,010	55.0	7,020
150	47.5	6,160	49.5	6,160	51.2	6,170	
160	43.6	5,420	45.6	5,420	47.2	5,420	
50' (15.2M) JIB & 170' (51.8M) BOOM	43	80.9	20,250*				
	50	79.1	19,850*				
	60	76.4	19,340*	78.6	17,560*	80.6	16,120*
	70	73.7	18,800*	75.9	17,240*	77.9	15,940*
	80	71.0	16,910	73.1	16,900*	75.1	15,750*
	90	68.2	14,200	70.3	14,200	72.3	14,210
	100	65.4	12,070	67.5	12,070	69.4	12,070
	110	62.5	10,350	64.6	10,360	66.4	10,360
	120	59.5	8,940	61.5	8,940	63.4	8,950
	130	56.4	7,770	58.4	7,770	60.2	7,780
	140	53.2	6,770	55.2	6,770	56.9	6,780
150	49.9	5,910	51.8	5,920	53.5	5,920	
160	46.3	5,180	48.3	5,180	49.8	5,180	
170	42.6	4,530	44.5	4,530	45.9	4,540	
50' (15.2M) JIB & 180' (54.9M) BOOM	45	80.8	20,050*				
	50	79.5	19,860*				
	60	77.0	19,310*	79.1	17,550*		
	70	74.4	18,820*	76.5	17,210*	78.4	15,850*
	80	71.8	16,660	73.9	16,660	75.8	15,690*
	90	69.2	13,930	71.2	13,940	73.1	13,940
	100	66.5	11,800	68.5	11,800	70.3	11,810
	110	63.8	10,090	65.8	10,090	67.5	10,090
	120	61.0	8,690	62.9	8,690	64.7	8,690
	130	58.1	7,500	60.0	7,510	61.7	7,510
	140	55.1	6,500	57.0	6,510	58.6	6,510
150	51.9	5,640	53.8	5,650	55.4	5,650	
160	48.7	4,910	50.6	4,910	52.1	4,910	
170	45.2	4,260	47.1	4,260	48.5	4,270	
180	41.6	3,690	43.4	3,690	44.7	3,690	
50' (15.2M) JIB & 190' (57.9M) BOOM	46	80.9	19,910*				
	50	80.0	19,720*				
	60	77.6	19,250*	79.5	17,490*	78.9	15,740*
	70	75.1	18,530*	77.1	17,180*		
	80	72.6	16,400	74.6	16,410	76.4	15,530*
	90	70.1	13,690	72.1	13,690	73.8	13,690
	100	67.6	11,560	69.5	11,560	71.2	11,560
	110	64.9	9,840	66.9	9,840	68.6	9,850
	120	62.3	8,430	64.2	8,430	65.9	8,430
	130	59.5	7,250	61.4	7,250	63.1	7,250
	140	56.7	6,250	58.6	6,250	60.2	6,250
150	53.8	5,400	55.6	5,400	57.2	5,400	
160	50.8	4,650	52.6	4,650	54.1	4,650	
170	47.6	4,000	49.4	4,000	50.8	4,010	
180	44.2	3,420	46.0	3,430	47.4	3,430	
190	40.6	2,920	42.3	2,920	43.6	2,930	
50' (15.2M) JIB & 200' (61.0M) BOOM	48	80.8	18,250*				
	50	80.4	18,030*				
	60	78.1	16,970*	80.0	15,670*		
	70	75.7	15,980*	77.6	14,990*	79.4	13,870*
	80	73.3	15,030*	75.2	14,250*	77.0	13,410*
	90	70.9	13,420	72.8	13,430	74.5	12,850*
	100	68.5	11,290	70.3	11,290	72.0	11,300
	110	66.0	9,580	67.9	9,580	69.5	9,580
	120	63.5	8,160	65.3	8,160	66.9	8,170
	130	60.9	6,980	62.7	6,980	64.3	6,990
	140	58.2	5,980	60.0	5,980	61.6	5,990
150	55.5	5,130	57.2	5,130	58.8	5,140	
160	52.6	4,380	54.4	4,380	55.8	4,390	
170	49.7	3,730	51.4	3,730	52.8	3,740	
180	46.6	3,150	48.3	3,160	49.6	3,160	
190	43.3	2,650	44.9	2,650	46.2	2,660	
200	39.8	2,200	41.4	2,200	42.6	2,200	

Boom and Jib Length	Jib Radius (Feet)	5.0 Deg Offset		15.0 Deg Offset		25.0 Deg Offset	
		Boom Angle	Ratings (Pounds)	Boom Angle	Ratings (Pounds)	Boom Angle	Ratings (Pounds)
60' (18.3M) JIB & 150' (45.7M) BOOM	42	81.0	15,370*				
	50	78.8	14,890*				
	60	76.0	14,380*	78.7	12,940*		
	70	73.2	13,800*	75.9	12,520*	78.4	11,320*
	80	70.3	13,330*	73.0	12,020*	75.5	10,980*
	90	67.4	12,800*	70.0	11,600*	72.5	10,640*
	100	64.4	12,290*	67.0	11,200*	69.4	10,350*
	110	61.3	10,940	63.9	10,850*	66.2	10,130*
	120	58.1	9,540	60.7	9,540	63.0	9,550
	130	54.8	8,360	57.4	8,360	59.6	8,370
	140	51.4	7,370	53.9	7,370	56.0	7,380
150	47.7	6,510	50.2	6,520	52.3	6,520	
60' (18.3M) JIB & 160' (48.8M) BOOM	44	80.9	15,300*				
	50	79.3	14,940*				
	60	76.6	14,450*	79.2	12,940*		
	70	73.9	13,940*	76.5	12,610*	78.9	11,390*
	80	71.2	13,480*	73.8	12,160*	76.2	11,050*
	90	68.4	13,020*	71.0	11,730*	73.3	10,730*
	100	65.6	12,400	68.1	11,300*	70.4	10,450*
	110	62.7	10,670	65.2	10,680	67.5	10,210*
	120	59.7	9,270	62.2	9,270	64.4	9,280
	130	56.6	8,090	59.1	8,090	61.2	8,100
	140	53.4	7,100	55.8	7,100	57.9	7,110
150	50.1	6,240	52.5	6,250	54.5	6,250	
160	46.5	5,500	48.9	5,500	50.8	5,500	
60' (18.3M) JIB & 170' (51.8M) BOOM	46	80.8	15,230*				
	50	79.8	14,980*				
	60	77.2	14,470*	79.7	12,950*		
	70	74.7	13,990*	77.1	12,650*	79.5	11,430*
	80	72.1	13,580*	74.5	12,230*	76.8	11,120*
	90	69.4	13,130*	71.9	11,810*	74.1	10,780*
	100	66.7	12,150	69.2	11,440*	71.4	10,520*
	110	64.0	10,440	66.4	10,440	68.6	10,260*
	120	61.2	9,040	63.5	9,040	65.7	9,040
	130	58.3	7,850	60.6	7,860	62.7	7,860
	140	55.3	6,850	57.6	6,860	59.6	6,860
150	52.2	5,990	54.5	6,000	56.4	6,000	
160	48.9	5,260	51.2	5,260	53.1	5,260	
170	45.5	4,610	47.7	4,610	49.5	4,620	
60' (18.3M) JIB & 180' (54.9M) BOOM	47	80.9	15,160*				
	50	80.2	15,010*				
	60	77.8	14,540*	80.1	12,950*		
	70	75.3	14,080*	77.7	12,640*	79.9	11,500*
	80	72.8	13,660*	75.2	12,350*	77.4	11,180*
	90	70.3	13,210*	72.7	11,940*	74.8	10,860*
	100	67.8	11,900	70.1	11,530*	72.2	10,610*
	110	65.2	10,170	67.5	10,170	69.5	10,180
	120	62.5	8,770	64.8	8,770	66.8	8,780
	130	59.7	7,590	62.0	7,590	64.0	7,590
	140	56.9	6,590	59.2	6,590	61.1	6,590
150	54.0	5,740	56.2	5,740	58.1	5,740	
160	51.0	4,990	53.2	4,990	55.0	5,000	
170	47.8	4,340	49.9	4,340	51.7	4,350	
180	44.4	3,770	46.5	3,770	48.2	3,770	
60' (18.3M) JIB & 190' (57.9M) BOOM	49	80.8	15,080*				
	50	80.6	15,030*				
	60	78.3	14,550*	80.5	12,960*		
	70	75.9	14,110*	78.2	12,680*	80.3	11,470*
	80	73.5	13,690*	75.8	12,360*	77.9	11,220*
	90	71.1	13,310*	73.4	12,050*	75.5	10,900*
	100	68.7	11,640	70.9	11,640	73.0	10,660*
	110	66.2	9,930	68.4	9,930	70.4	9,930
	120	63.7	8,510	65.9	8,520	67.9	8,520
	130	61.1	7,330	63.3	7,330	65.2	7,340
	140	58.4	6,340	60.6	6,340	62.5	6,350
150	55.7	5,480	57.8	5,480	59.7	5,490	
160	52.8	4,730	54.9	4,730	56.7	4,740	
170	49.9	4,080	51.9	4,080	53.7	4,090	
180	46.8	3,500	48.8	3,510	50.5	3,510	
190	43.5	3,000	45.5	3,000	47.1	3,010	

LIFT RATINGS IN POUNDS (continued)

With 59HI Offset Tip Boom, #9HL Jib and 52,900 Pound Counterweight

Boom and Jib Length	Jib Radius (Feet)	5.0 Deg Offset		15.0 Deg Offset		25.0 Deg Offset	
		Boom Angle	Ratings (Pounds)	Boom Angle	Ratings (Pounds)	Boom Angle	Ratings (Pounds)
60' (18.3M) JIB & 200' (61.0M) BOOM	50	80.9	14,980*				
	60	78.7	14,550*	80.9	12,900*		
	70	76.5	14,130*	78.7	12,670*	80.7	11,330*
	80	74.2	13,770*	76.4	12,410*	78.4	11,260*
	90	71.9	13,380*	74.1	12,090*	76.1	10,980*
	100	69.6	11,380	71.7	11,390	73.7	10,710*
	110	67.2	9,660	69.3	9,660	71.3	9,670
	120	64.8	8,250	66.9	8,250	68.8	8,250
	130	62.3	7,070	64.4	7,080	66.3	7,080
	140	59.8	6,070	61.8	6,070	63.7	6,080
	150	57.2	5,210	59.2	5,210	61.0	5,220
	160	54.5	4,460	56.5	4,460	58.3	4,470
	170	51.7	3,810	53.7	3,820	55.4	3,820
	180	48.8	3,240	50.8	3,240	52.5	3,240
190	45.8	2,730	47.7	2,730	49.3	2,740	
200	42.6	2,270	44.5	2,280	46.0	2,280	
70' (21.3M) JIB & 180' (54.9M) BOOM	50	80.8	11,870*				
	60	78.5	11,420*				
	70	76.1	11,000*	78.8	9,560*		
	80	73.7	10,530*	76.4	9,190*	78.9	8,190*
	90	71.3	10,060*	74.0	8,820*	76.4	7,940*
	100	68.9	9,600*	71.5	8,520*	73.9	7,710*
	110	66.4	9,220*	69.0	8,240*	71.4	7,470*
	120	63.9	8,830	66.4	7,980*	68.8	7,290*
	130	61.3	7,650	63.8	7,650	66.1	7,140*
	140	58.6	6,650	61.1	6,650	63.4	6,660
	150	55.9	5,800	58.4	5,800	60.6	5,810
	160	53.0	5,050	55.5	5,050	57.6	5,060
	170	50.0	4,400	52.5	4,400	54.6	4,410
	180	46.9	3,820	49.4	3,830	51.4	3,830

Boom and Jib Length	Jib Radius (Feet)	5.0 Deg Offset		15.0 Deg Offset		25.0 Deg Offset	
		Boom Angle	Ratings (Pounds)	Boom Angle	Ratings (Pounds)	Boom Angle	Ratings (Pounds)
70' (21.3M) JIB & 190' (57.9M) BOOM	51	80.9	11,850*				
	60	78.9	11,460*				
	70	76.7	11,060*	79.2	9,620*		
	80	74.4	10,680*	76.9	9,240*	79.3	8,200*
	90	72.1	10,180*	74.6	8,900*	77.0	7,980*
	100	69.7	9,740*	72.3	8,590*	74.6	7,750*
	110	67.4	9,360*	69.9	8,320*	72.2	7,520*
	120	65.0	8,580	67.4	8,040*	69.7	7,340*
	130	62.5	7,400	64.9	7,410	67.2	7,180*
	140	60.0	6,400	62.4	6,410	64.6	6,410
	150	57.4	5,540	59.8	5,540	61.9	5,550
	160	54.7	4,800	57.1	4,800	59.2	4,810
	170	51.9	4,140	54.3	4,150	56.3	4,150
	180	49.0	3,580	51.3	3,580	53.3	3,580
190	46.0	3,060	48.3	3,060	50.2	3,070	
70' (21.3M) JIB & 200' (61.0M) BOOM	53	80.8	11,790*				
	60	79.3	11,490*				
	70	77.2	11,110*	79.6	9,660*		
	80	75.0	10,720*	77.4	9,310*	79.7	8,230*
	90	72.8	10,290*	75.2	8,980*	77.5	8,010*
	100	70.5	9,860*	73.0	8,670*	75.2	7,790*
	110	68.3	9,470*	70.7	8,380*	72.9	7,580*
	120	65.9	8,320	68.3	8,130*	70.5	7,380*
	130	63.6	7,140	66.0	7,140	68.1	7,150
	140	61.2	6,140	63.5	6,140	65.7	6,140
	150	58.7	5,270	61.1	5,280	63.1	5,280
	160	56.2	4,530	58.5	4,540	60.5	4,540
	170	53.6	3,870	55.9	3,880	57.8	3,880
	180	50.8	3,310	53.1	3,310	55.0	3,320
190	48.0	2,790	50.3	2,790	52.1	2,800	
200	45.0	2,340	47.3	2,350	49.0	2,350	

JIB COMPOSITION CHART

#9HL Jib Composition

Jib Length Feet	20' Inner	10' Center	20' Outer	20' Outer
40	1	0	0	1
50	1	1	0	1
60	1	0	1	1
70	1	1	1	1

MAXIMUM BOOM & JIB SELF-ERECTION DATA

#9HL JIB	Over The End		Over The Side (with Extenders in place)	
	Boom Length Ft.	Jib Length Ft.	Boom Length Ft.	Jib Length Ft.
	230	0	-	-
220	0	220	0	
210	20	210	0	
200	40	200	50	

LOAD HOISTING INFORMATION

7/8" Diameter EIPS Wire Rope		
Maximum Lifting Capacity (Pounds)	Minimum Parts of Line	Maximum Auxiliary Hoisting Distance (Feet)
181,900	8	78
159,200	7	89
136,450	6	104
113,700	5	125
90,950	4	156
68,200	3	208
45,450	2	313
22,700	1	626

1" Diameter EIPS Wire Rope		
Maximum Lifting Capacity (Pounds)	Minimum Parts of Line	Maximum Main Hoisting Distance (Feet)
220,000	8	130
206,800	7	148
177,250	6	173
147,700	5	208
118,150	4	260
88,600	3	346
59,050	2	520
29,500	1	1,040

BOOM COMPOSITION CHART

Boom Length Feet	Boom Sections				
	25' 59HI Inner	10' 59H Center	20' 59H Center	40' 59H Center	25' 59HI Outer
50	1	0	0	0	1
60	1	1	0	0	1
70	1	0	1	0	1
80	1	1	1	0	1
90	1	0	0	1	1
100	1	1	0	1	1
110	1	0	1	1	1
120	1	1	1	1	1
130	1	0	0	2	1
140	1	1	0	2	1
150	1	0	1	2	1
160	1	1	1	2	1
170	1	0	0	3	1
180	1	1	0	3	1
190	1	0	1	3	1
200	1	1	1	3	1
210	1	0	0	4	1
220	1	1	0	4	1
230	1	0	1	4	1

HOIST DRUM PERFORMANCE

THIRD DRUM – 3/4" Diameter Rope			
Rope Layer	Line Speed (Feet per Minute)	Single Line Pull	Total Rope Length
1st*	225	18,000	108
2nd*	245	17,222	224
3rd*	262	16,094	348
4th*	279	15,104	480
5th*	296	14,230	620
6th**	314	N/A	769
7th**	331	N/A	925

6 x 25 RRL, EIPS, IWRC, 58,800# MBS; Part No. 809387

AUXILIARY DRUM – 7/8" Diameter Rope					
Rope Layer	High Range		Low Range		Total Rope Length
	Line Speed (Feet per Minute)	Single Line Pull	Line Speed (Feet per Minute)	Single Line Pull	
1st*	348	26,140	241	37,670	64
2nd*	377	24,100	262	34,720	128
3rd*	407	22,360	282	32,210	204
4th*	433	20,860	303	30,040	278
5th*	466	19,540	323	28,150	364
6th*	495	18,380	343	26,450	449
7th*	524	17,350	364	24,990	545
8th*	553	16,430	384	23,670	640
9th**	583	15,600	404	22,450	747
10th**	612	14,850	425	21,400	852

**Single Line Pull reflects the maximum hydraulic capacity of the hoist unit at the given layer and range setting. The allowable single line pull may be limited by the strength of the hoist rope. See load hoisting table for rope limitations.

MAIN HOIST – 1" Diameter Rope					
Rope Layer	High Range		Low Range		Total Rope Length
	Line Speed (Feet per Minute)	Single Line Pull	Line Speed (Feet per Minute)	Single Line Pull	
1st*	322	28,210	224	40,640	105
2nd*	350	26,010	243	37,470	212
3rd*	377	24,130	261	34,760	335
4th*	404	22,500	281	32,420	459
5th*	431	21,080	299	30,370	599
6th*	459	19,830	318	28,570	741
7th*	486	18,720	337	26,960	898
8th*	513	17,720	357	25,530	1,056
9th**	540	16,830	375	24,240	1,232
10th**	568	16,020	394	23,080	1,407

* = Working Layers • ** = Storage Layers

SPECIFICATIONS

Swing Speed 3.00 RPM
 Travel Speed87 MPH High Range
 0.6 MPH Low Range
 Gradeability 30% (approximately 17°)

CRANE RATING DATA

WARNING

This rating chart is invalid if the crane has been modified or altered by use of other than GENUINE AMERICAN PARTS as such modifications or alterations may affect its capacity or safe operation. See American Crane Cooperation Service Bulletin #259.

The ratings in this chart are for planning purposes only. Only those ratings specifically assigned to a crane and mounted in the operator's cab or in the Operator's Manual should be used for actual operation.

Ratings in this chart are in POUNDS and do not exceed the percentage of tipping specified for this crane by ANSI B30.5. All ratings require that the crane be standing level on a firm uniformly supporting surface.

Do not lift loads in excess of those shown on this chart. Lifting loads in excess of those shown or operation not in accordance with good operating practice, including limitations shown on page 3499 of Operator's Manual, can cause tipping, structural damage or catastrophic failure.

Asterisk (*) areas on this chart indicate ratings which are limited by strength of material or factors other than stability (tipping).

RADIUS IN FEET is the horizontal distance at ground level from the crane centerline of rotation to a vertical line through the center of gravity of the suspended load.

When using the main boom fall with jib in place, the main fall ratings must be reduced by the jib effective weight shown on the jib rating chart plus twice the weight of all suspended blocks, slings, rope, etc., at the jib fall.

Blocks, slings, buckets and other load carrying devices are considered part of the load. The weight of standard hoisting ropes for the rating at a given radius has been calculated as part of the boom point load and need not be considered in determining net allowable loads.

Ratings shown on this chart make no allowance for such factors as out of plumb loads, wind, poor soil conditions, improper inflation of rubber tires and dynamic effects due to excessive operating speeds. The user (operator) must exercise judgement to make allowance for these conditions. See page 3499 of Operator's Manual for detailed information.

No account is taken of the wind force on the load. This effect, which can be substantial for loads with large surface areas, must be considered by the user. In any wind it is strongly recommended that taglines be used to control the load.

BOOM HOIST LINE is 12 parts of 3/4 inch diameter IPS wire rope with a minimum breaking strength of 51,200 pounds.

PENDANT SUSPENSION LINE is 2 parts of 1-3/8 inch diameter EEIPS wire rope with a minimum breaking strength of 211,000 pounds.

JIB BACKSTAY AND FRONTSTAY LINES are 2 parts of 0.875 inch diameter IPS wire rope with a minimum breaking strength of 69,200 pounds.

MAIN LOAD LINE is 1.000 inch diameter EIPS wire rope with a minimum breaking strength of 103,400 pounds.

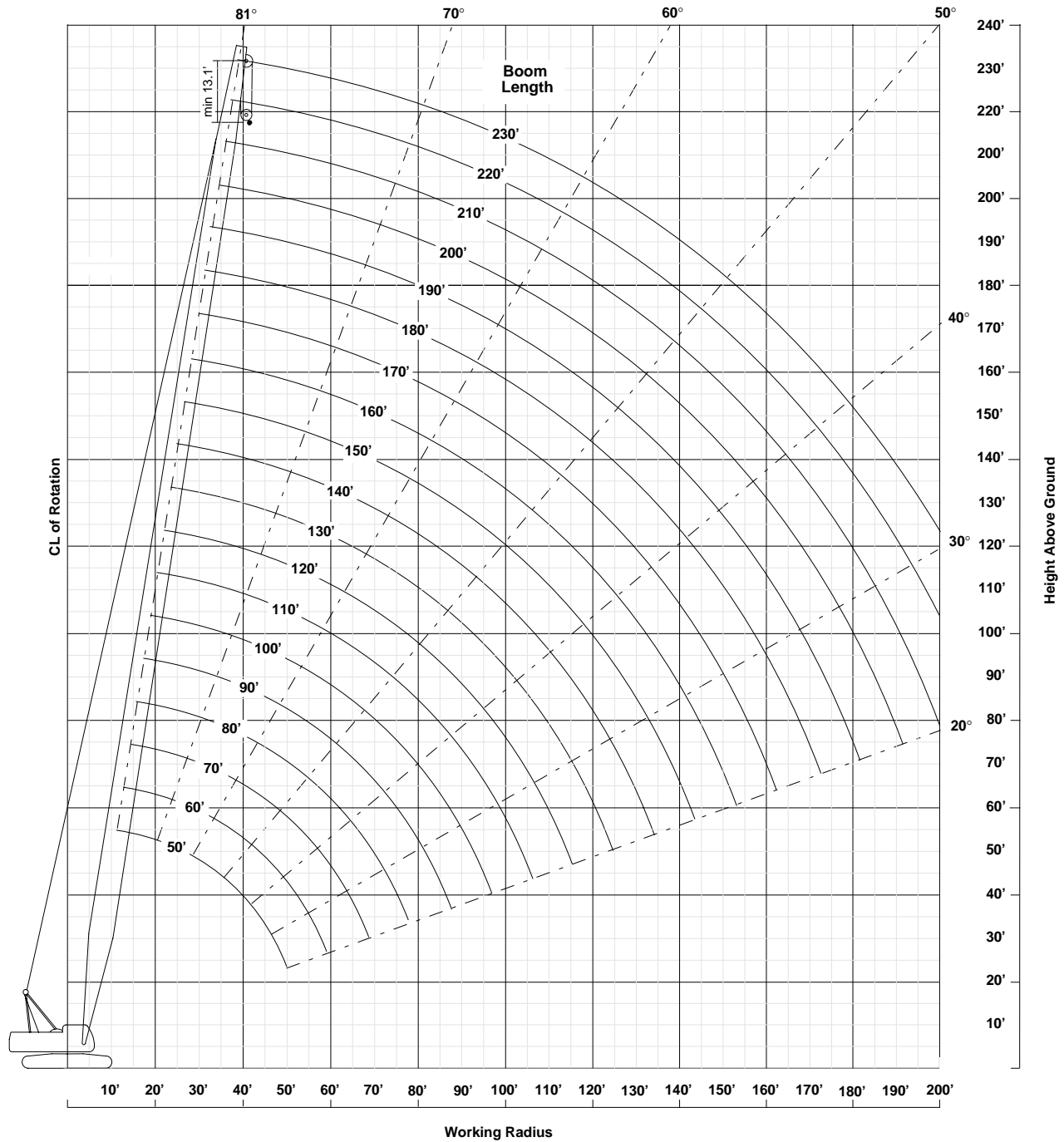
WHIP LINE is 7/8 inch diameter EIPS wire rope with a minimum breaking strength of 79,600 pounds.

ERECTION

Erection "OVER THE END" is with the boom over the idler end with idler tumblers blocked (See operator's manual for blocking instructions). Erection "OVER THE SIDE" is with the boom 90° to the sideframes and with the side frames extended. Blocks, slings and other carrying devices must be on the ground during erection.

AMERICAN MODEL HC 110 WORKING RANGES WITH 59HI BOOM

HC110 RANGE DIAGRAM 59HI BOOM



For more information, product demonstration, or details on sales, lease and rental plans, please contact your local Terex American Crane Distributor.

We reserve the right to amend these specifications at any time without notice. The only warranty applicable is our standard written warranty applicable to the particular product and sale. We make no other warranty, expressed or implied.

 **TEREX CRANES**

AMERICAN CRANE CORPORATION
202 Raleigh Street
Wilmington, NC 28412 USA
(910) 395-8500 • FAX: (910) 395-8538
E-mail: american@american-crane.com

www.terexlift.com